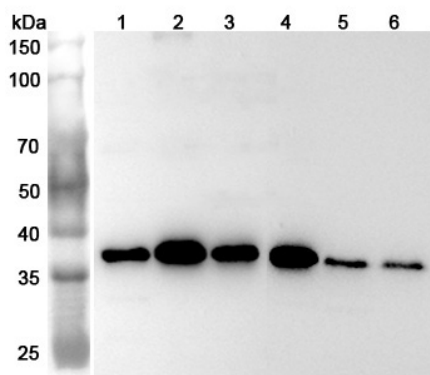


Anti-Human U2AF1 Polyclonal Antibody

Summary

Catalog No.	PHF85001
Host species	Rabbit
Tested applications	ELISA: 1:4000-1:8000, IHC: 1:50-1:100, WB: 1:1000-1:4000
Species reactivity	Human
Immunogen	E. coli - derived recombinant Human U2AF1 (Met1-Arg196).
Form	Liquid
Storage buffer	0.01M PBS, pH 7.4, 50% Glycerol, 0.05% Proclin 300.
Clonality	Polyclonal
Isotype	IgG
Applications	ELISA, IHC, WB
Target	U2AFBP, U2 auxiliary factor 35 kDa subunit, U2AF1, U2 snRNP auxiliary factor small subunit, U2 small nuclear RNA auxiliary factor 1, Splicing factor U2AF 35 kDa subunit, U2AF35
Purification	Purified by antigen affinity column.
Accession	Q01081
Stability and Storage	Use a manual defrost freezer and avoid repeated freeze thaw cycles. Store at 2 to 8°C for frequent use. Store at -20 to -80°C for twelve months from the date of receipt.
Note	For research use only.

Data Image



Western Blot

Various lysates were subjected to SDS PAGE followed by western blot with U2AF1 antibody (PHF85001) at 1 μ g/ml.

Lane 1: Raji cell lysate

Lane 2: 293T cell lysate

Lane 3: K562 cell lysate

Lane 4: Jurkat cell lysate

Lane 5: Mouse kidney lysate

Lane 6: Rat kidney lysate

Second Ab: Goat Anti-Rabbit IgG H&L Polyclonal antibody, HRP (PTB96431) at 0.1 μ g/mL.

Predict MW: 28 kDa

Observed MW: 35 kDa



Immunohistochemical

Immunohistochemical analysis of human cerebral cortex tissue stained for U2AF1 with PHF85001.



Western Blot

Recombinant Protein lysates were subjected to SDS PAGE followed by western blot with U2AF1 antibody (PHF85001) at 1 μ g/ml.

Lane 1: Recombinant Protein

Second Ab: Goat Anti-Rabbit IgG H&L Polyclonal antibody, HRP (PTB96431) at 0.1 μ g/mL.

Predict MW: 25 kDa

Observed MW: 25 kDa