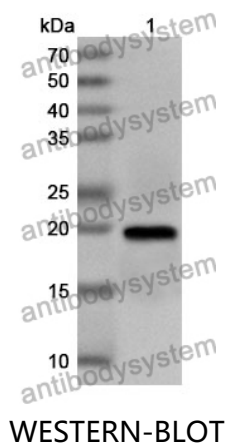


Anti-Human NPRL2 Polyclonal Antibody

Summary

Catalog No.	PHK49001
Host species	Rabbit
Tested applications	ELISA: 1:4000-1:8000, IHC: 1:50-1:100, WB: 1:1000-1:4000
Species reactivity	Human
Immunogen	E. coli - derived recombinant Human NPRL2 (Arg6-Glu161).
Form	Liquid
Storage buffer	0.01M PBS, pH 7.4, 50% Glycerol, 0.05% Proclin 300.
Clonality	Polyclonal
Isotype	IgG
Applications	ELISA, IHC, WB
Target	Gene 21 protein, TUSC4, G21 protein, NPRL2, GATOR complex protein NPRL2, Tumor suppressor candidate 4, Nitrogen permease regulator 2-like protein, NPR2-like protein
Purification	Purified by antigen affinity column.
Accession	Q8WTW4
Stability and Storage	Use a manual defrost freezer and avoid repeated freeze thaw cycles. Store at 2 to 8°C for frequent use. Store at -20 to -80°C for twelve months from the date of receipt.
Note	For research use only.

Data Image



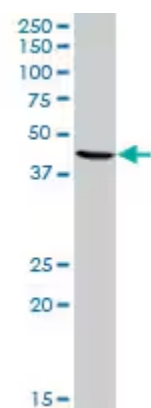
Recombinant Protein lysates were subjected to SDS PAGE followed by western blot with NPRL2 antibody (PHK49001) at 1 μ g/ml.

Lane 1: Recombinant protein

Second Ab: Goat Anti-Rabbit IgG H&L Polyclonal antibody, HRP (PTB96431) at 0.1 μ g/mL.

Predict MW: 20 kDa

Observed MW: 20 kDa



Western Blot

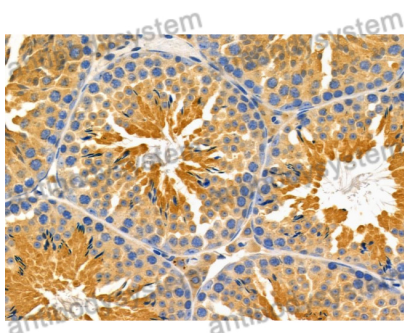
Various lysates were subjected to SDS PAGE followed by western blot with NPRL2 antibody (PHK49001) at 1 μ g/ml.

Lane 1: Hela

Second Ab: Goat Anti-Rabbit IgG H&L Polyclonal antibody, HRP (PTB96431) at 0.1 μ g/mL.

Predict MW: 44 kDa

Observed MW: 44 kDa



Immunohistochemical

Immunohistochemical analysis of mouse testis stained for NPRL2 with PHK49001.