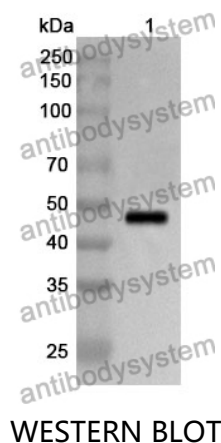


Anti-BMP4 Polyclonal Antibody

Summary

Catalog No.	PHC94301
Host species	Rabbit
Tested applications	ELISA: 1:4000-1:8000, IHC: 1:50-1:100, WB: 1:1000-1:4000
Species reactivity	Human, Mouse, Rat
Immunogen	E. coli - derived recombinant Human BMP4 (Ala24-Arg408).
Form	Liquid
Storage buffer	0.01M PBS, pH 7.4, 50% Glycerol, 0.05% Proclin 300.
Clonality	Polyclonal
Isotype	IgG
Applications	ELISA, IHC, WB
Target	BMP2B,BMP-2B,DVR4,Bone morphogenetic protein 4,BMP-4,BMP4,Bone morphogenetic protein 2B
Purification	Purified by antigen affinity column.
Accession	P12644
Stability and Storage	Use a manual defrost freezer and avoid repeated freeze thaw cycles. Store at 2 to 8°C for frequent use. Store at -20 to -80°C for twelve months from the date of receipt.
Note	For research use only.

Data Image



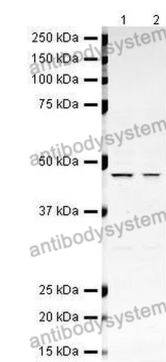
Recombinant Protein lysates were subjected to SDS PAGE followed by western blot with BMP4 antibody (PHC94301) at 1 µg/ml.

Lane 1: Recombinant protein

Second Ab: Goat Anti-Rabbit IgG H&L Polyclonal antibody, HRP (PTB96431) at 0.1 µg/mL.

Predict MW: 46 kDa

Observed MW: 46 kDa



Various lysates were subjected to SDS PAGE followed by western blot with BMP4 antibody (PHC94301) at 1 µg/ml.

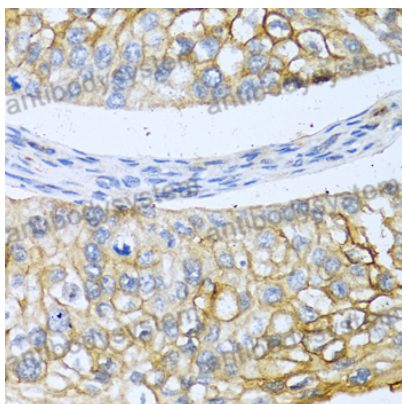
Lane 1: Human heart

Lane 2: Human skeletal muscle

Second Ab: Goat Anti-Rabbit IgG H&L Polyclonal antibody, HRP (PTB96431) at 0.1 µg/mL.

Predict MW: 46 kDa

Observed MW: 46 kDa



Immunohistochemical

Immunohistochemical analysis of human prostate cancer tissue stained for BMP4 with PHC94301.