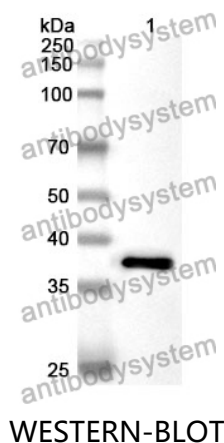


Anti-Human TUBGCP3 Polyclonal Antibody

Summary

Catalog No.	PHK48901
Host species	Rabbit
Tested applications	ELISA: 1:4000-1:8000, IHC: 1:50-1:100, WB: 1:1000-1:4000
Species reactivity	Human
Immunogen	E. coli - derived recombinant Human TUBGCP3 (Ile245-Ser554).
Form	Liquid
Storage buffer	0.01M PBS, pH 7.4, 50% Glycerol, 0.05% Proclin 300.
Clonality	Polyclonal
Isotype	IgG
Applications	ELISA, IHC, WB
Target	Gamma-ring complex protein 104 kDa, GCP-3, hGrip104, Spindle pole body protein Spc98 homolog, GCP3, h104p, Gamma-tubulin complex component 3, hGCP3, TUBGCP3, hSpc98
Purification	Purified by antigen affinity column.
Accession	Q96CW5
Stability and Storage	Use a manual defrost freezer and avoid repeated freeze thaw cycles. Store at 2 to 8°C for frequent use. Store at -20 to -80°C for twelve months from the date of receipt.
Note	For research use only.

Data Image



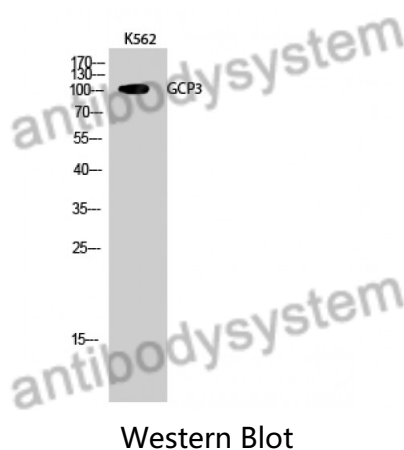
Recombinant Protein lysates were subjected to SDS PAGE followed by western blot with TUBGCP3 antibody (PHK48901) at 1 µg/ml.

Lane 1: Recombinant protein

Second Ab: Goat Anti-Rabbit IgG H&L Polyclonal antibody, HRP (PTB96431) at 0.1 µg/mL.

Predict MW: 38 kDa

Observed MW: 38 kDa



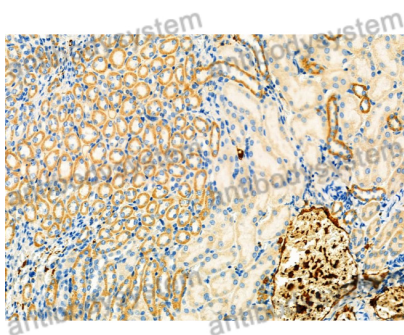
Various lysates were subjected to SDS PAGE followed by western blot with TUBGCP3 antibody (PHK48901) at 1 µg/ml.

Lane 1: K562

Second Ab: Goat Anti-Rabbit IgG H&L Polyclonal antibody, HRP (PTB96431) at 0.1 µg/mL.

Predict MW: 104 kDa

Observed MW: 104 kDa



Immunohistochemical

Immunohistochemical analysis of mouse kidney stained for TUBGCP3 with PHK48901.