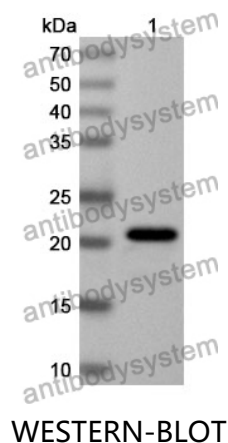


Anti-Human SKIV2L Polyclonal Antibody

Summary

| | |
|------------------------------|---|
| Catalog No. | PHH11101 |
| Host species | Rabbit |
| Tested applications | ELISA: 1:4000-1:8000, IHC: 1:50-1:100, WB: 1:1000-1:4000 |
| Species reactivity | Human |
| Immunogen | E. coli - derived recombinant Human SKIV2L (Gly803-His975). |
| Form | Liquid |
| Storage buffer | 0.01M PBS, pH 7.4, 50% Glycerol, 0.05% Proclin 300. |
| Clonality | Polyclonal |
| Isotype | IgG |
| Applications | ELISA, IHC, WB |
| Target | SKIV2L, Helicase SKI2W, W, Helicase-like protein, HLP, SKI2W, Ski2, SKIV2, DDX13 |
| Purification | Purified by antigen affinity column. |
| Accession | Q15477 |
| Stability and Storage | Use a manual defrost freezer and avoid repeated freeze thaw cycles. Store at 2 to 8°C for frequent use. Store at -20 to -80°C for twelve months from the date of receipt. |
| Note | For research use only. |

Data Image



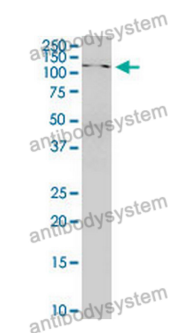
Recombinant Protein lysates were subjected to SDS PAGE followed by western blot with SKIV2L antibody (PHH11101) at 1 µg/ml.

Lane 1: Recombinant protein

Second Ab: Goat Anti-Rabbit IgG H&L Polyclonal antibody, HRP (PTB96431) at 0.1 µg/mL.

Predict MW: 21 kDa

Observed MW: 21 kDa



Western Blot

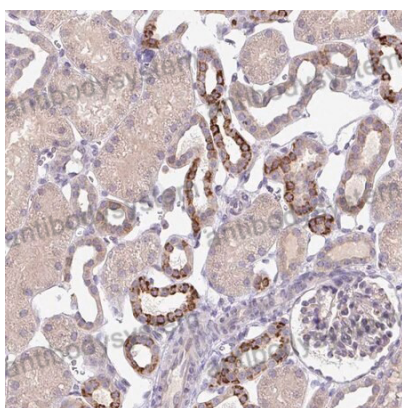
Various lysates were subjected to SDS PAGE followed by western blot with SKIV2L antibody (PHH11101) at 1 µg/ml.

Lane 1: Hela

Second Ab: Goat Anti-Rabbit IgG H&L Polyclonal antibody, HRP (PTB96431) at 0.1 µg/mL.

Predict MW: 138 kDa

Observed MW: 138 kDa



Immunohistochemical

Immunohistochemical analysis of human kidney tissue stained for SKIV2L with PHH11101.