

Anti-Human PMP2 Polyclonal Antibody

Summary

Catalog No.	PHB99501
Host species	Rabbit
Tested applications	ELISA: 1:4000-1:8000, IHC: 1:50-1:100, WB: 1:1000-1:4000
Species reactivity	Human
Immunogen	E. coli - derived recombinant Human PMP2 (Met1-Val132).
Form	Liquid
Storage buffer	0.01M PBS, pH 7.4, 50% Glycerol, 0.05% Proclin 300.
Clonality	Polyclonal
Isotype	IgG
Applications	ELISA, IHC, WB
Target	PMP2, Myelin P2 protein, Peripheral myelin protein 2
Purification	Purified by antigen affinity column.
Accession	P02689
Stability and Storage	Use a manual defrost freezer and avoid repeated freeze thaw cycles. Store at 2 to 8°C for frequent use. Store at -20 to -80°C for twelve months from the date of receipt.
Note	For research use only.

Data Image



Recombinant Protein lysates were subjected to SDS PAGE followed by western blot with PMP2 antibody (PHB99501) at 1 µg/ml.

Lane 1: Recombinant protein

Second Ab: Goat Anti-Rabbit IgG H&L Polyclonal antibody, HRP (PTB96431) at 0.1 µg/mL.

Predict MW: 17 kDa

Observed MW: 17 kDa

Various lysates were subjected to SDS PAGE followed by western blot with PMP2 antibody (PHB99501) at 1 µg/ml.

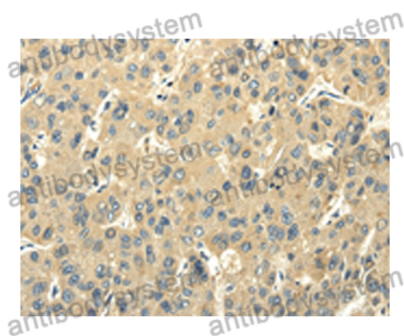
Lane 1: EC109

Second Ab: Goat Anti-Rabbit IgG H&L Polyclonal antibody, HRP (PTB96431) at 0.1 µg/mL.

Predict MW: 15 kDa

Observed MW: 15 kDa

Western Blot



Immunohistochemical

Immunohistochemical analysis of human liver cancer stained for PMP2 with PHB99501.