

# Anti-Human NME1 Polyclonal Antibody

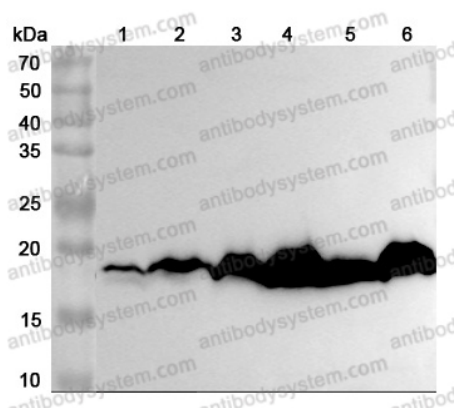
## Summary

---

<b>Catalog No.</b>	PHD12001
<b>Host species</b>	Rabbit
<b>Tested applications</b>	ELISA: 1:4000-1:8000, IHC: 1:50-1:100, WB: 1:1000-1:4000
<b>Species reactivity</b>	Human
<b>Immunogen</b>	E. coli - derived recombinant Human NME1 (Met1-Glu152).
<b>Form</b>	Liquid
<b>Storage buffer</b>	0.01M PBS, pH 7.4, 50% Glycerol, 0.05% Proclin 300.
<b>Clonality</b>	Polyclonal
<b>Isotype</b>	IgG
<b>Applications</b>	ELISA, IHC, WB
<b>Target</b>	NDPKA, NME1, NDP kinase A, Nucleoside diphosphate kinase A, Granzyme A-activated DNase, NM23, Metastasis inhibition factor nm23, GAAD, Tumor metastatic process-associated protein, NDK A, NM23-H1
<b>Purification</b>	Purified by antigen affinity column.
<b>Accession</b>	P15531
<b>Stability and Storage</b>	Use a manual defrost freezer and avoid repeated freeze thaw cycles. Store at 2 to 8°C for frequent use. Store at -20 to -80°C for twelve months from the date of receipt.
<b>Note</b>	For research use only.

## Data Image

---



Western Blot

Various lysates were subjected to SDS PAGE followed by western blot with NME1 antibody (PHD12001) at 1 $\mu$ g/ml.

Lane 1: Mouse brain lysate

Lane 2: Mouse lung lysate

Lane 3: Mouse liver lysate

Lane 4: Rat brain lysate

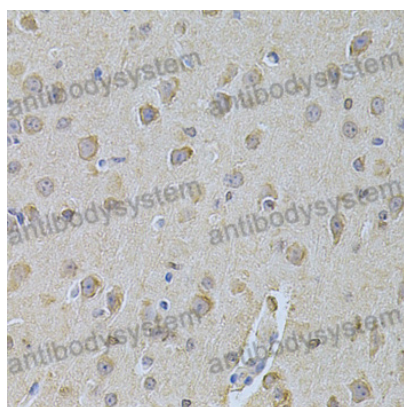
Lane 5: Rat lung lysate

Lane 6: Rat liver lysate

Second Ab: Goat Anti-Rabbit IgG H&L Polyclonal antibody, HRP (PTB96431) at 0.1  $\mu$ g/mL.

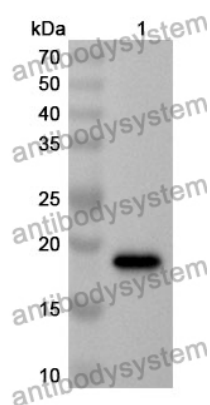
Predict MW: 17 kDa

Observed MW: 17 kDa



Immunohistochemical

Immunohistochemical analysis of mouse brain stained for NME1 with PHD12001.



Western Blot

Recombinant Protein lysates were subjected to SDS PAGE followed by western blot with NME1 antibody (PHD12001) at 1  $\mu$ g/ml.

Lane 1: Recombinant Protein

Second Ab: Goat Anti-Rabbit IgG H&L Polyclonal antibody, HRP (PTB96431) at 0.1  $\mu$ g/mL.

Predict MW: 19 kDa

Observed MW: 19 kDa