

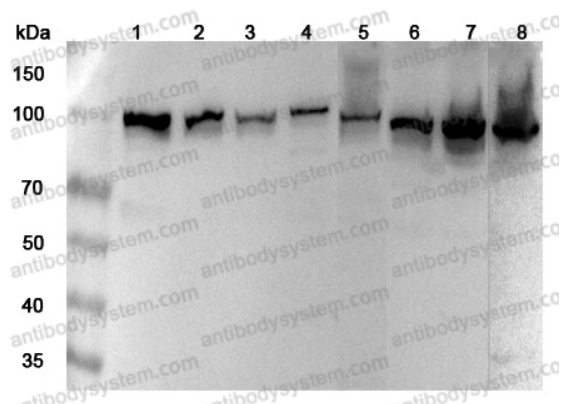
Anti-Human MTHFD1 Polyclonal Antibody

Summary

Catalog No.	PHC89601
Host species	Rabbit
Tested applications	ELISA: 1:4000-1:8000, IHC: 1:50-1:100, WB: 1:1000-1:4000
Species reactivity	Human
Immunogen	E. coli - derived recombinant Human MTHFD1 (Met1-Lys297).
Form	Liquid
Storage buffer	0.01M PBS, pH 7.4, 50% Glycerol, 0.05% Proclin 300.
Clonality	Polyclonal
Isotype	IgG
Applications	ELISA, IHC, WB
Target	MTHFC, C1-THF synthase, MTHFD1, C-1-tetrahydrofolate synthase, cytoplasmic, MTHFD
Purification	Purified by antigen affinity column.
Accession	P11586
Stability and Storage	Use a manual defrost freezer and avoid repeated freeze thaw cycles. Store at 2 to 8°C for frequent use. Store at -20 to -80°C for twelve months from the date of receipt.
Note	For research use only.

Data Image

Various lysates were subjected to SDS PAGE followed by western blot with MTHFD1 antibody (PHC89601) at 1 μ g/ml.



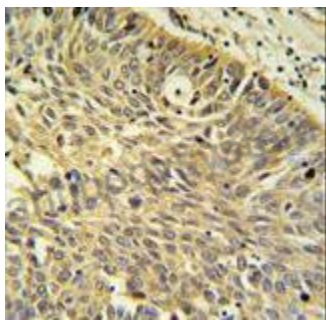
Western Blot

Lane 1: 293T cell lysate
Lane 2: Jurkat cell lysate
Lane 3: K562 cell lysate
Lane 4: Hela cell lysate
Lane 5: A549 cell lysate
Lane 6: Mouse kidney lysate
Lane 7: Mouse liver lysate
Lane 8: Rat liver lysate

Second Ab: Goat Anti-Rabbit IgG H&L Polyclonal antibody, HRP (PTB96431) at 0.1 μ g/mL.

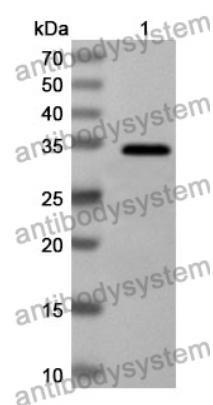
Predict MW: 101 kDa

Observed MW: 101 kDa



Immunohistochemical

Immunohistochemical analysis of human lung cancer tissue stained for MTHFD1 with PHC89601.



Western Blot

Recombinant Protein lysates were subjected to SDS PAGE followed by western blot with MTHFD1 antibody (PHC89601) at 1 μ g/ml.

Lane 1: Recombinant Protein

Second Ab: Goat Anti-Rabbit IgG H&L Polyclonal antibody, HRP (PTB96431) at 0.1 μ g/mL.

Predict MW: 34 kDa

Observed MW: 34 kDa