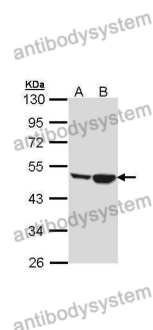


Anti-CKMT1A Polyclonal Antibody

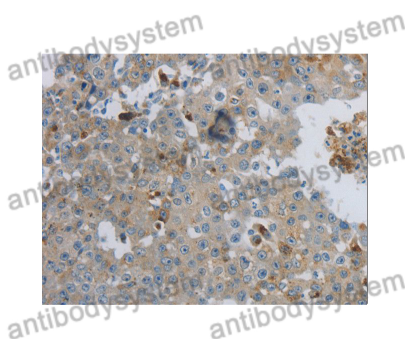
Summary

Catalog No.	PHC94001
Host species	Rabbit
Tested applications	ELISA: 1:4000-1:8000, IHC: 1:50-1:100, WB: 1:1000-1:4000
Species reactivity	Human, Mouse, Rat
Immunogen	E. coli - derived recombinant Human CKMT1A (Ser41-Ile250).
Form	Liquid
Storage buffer	0.01M PBS, pH 7.4, 50% Glycerol, 0.05% Proclin 300.
Clonality	Polyclonal
Isotype	IgG
Applications	ELISA, IHC, WB
Target	U-MtCK,CKMT1A,CKMT,Acidic-type mitochondrial creatine kinase,Ubiquitous mitochondrial creatine kinase,Mia-CK,Creatine kinase U-type,mitochondrial
Purification	Purified by antigen affinity column.
Accession	P12532
Stability and Storage	Use a manual defrost freezer and avoid repeated freeze thaw cycles. Store at 2 to 8°C for frequent use. Store at -20 to -80°C for twelve months from the date of receipt.
Note	For research use only.

Data Image



Western Blot



Immunohistochemical

Various lysates were subjected to SDS PAGE followed by western blot with CKMT1A antibody (PHC94001) at 1 µg/ml.

Lane 1: H1299

Lane 2: Hela

Second Ab: Goat Anti-Rabbit IgG H&L Polyclonal antibody, HRP (PTB96431) at 0.1 µg/mL.

Predict MW: 50 kDa

Observed MW: 50 kDa

Immunohistochemical analysis of Human lung cancer tissue stained for CKMT1A with PHC94001.