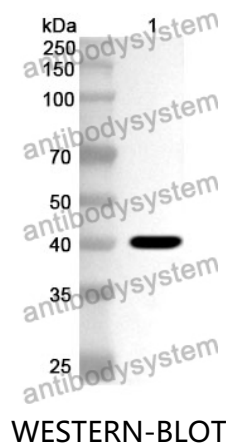


Anti-Human MRPL37 Polyclonal Antibody

Summary

Catalog No.	PHK47801
Host species	Rabbit
Tested applications	ELISA: 1:4000-1:8000, IHC: 1:50-1:100, WB: 1:1000-1:4000
Species reactivity	Human
Immunogen	E. coli - derived recombinant Human MRPL37 (Asp101-Ala423).
Form	Liquid
Storage buffer	0.01M PBS, pH 7.4, 50% Glycerol, 0.05% Proclin 300.
Clonality	Polyclonal
Isotype	IgG
Applications	ELISA, IHC, WB
Target	L37mt, MRP-L37, MRPL37, 39S ribosomal protein L2, mitochondrial, MRPL2, 39S ribosomal protein L37, mitochondrial, L2mt, MRP-L2, RPML2, Mitochondrial large ribosomal subunit protein mL37
Purification	Purified by antigen affinity column.
Accession	Q9BZE1
Stability and Storage	Use a manual defrost freezer and avoid repeated freeze thaw cycles. Store at 2 to 8°C for frequent use. Store at -20 to -80°C for twelve months from the date of receipt.
Note	For research use only.

Data Image



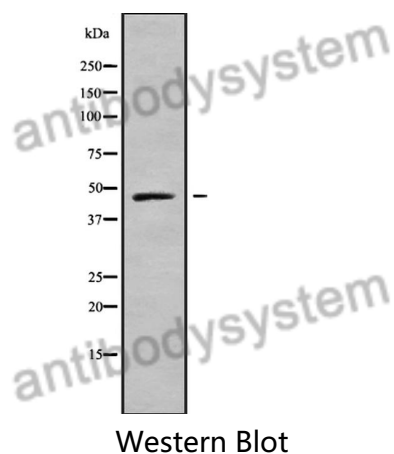
Recombinant Protein lysates were subjected to SDS PAGE followed by western blot with MRPL37 antibody (PHK47801) at 1 µg/ml.

Lane 1: Recombinant protein

Second Ab: Goat Anti-Rabbit IgG H&L Polyclonal antibody, HRP (PTB96431) at 0.1 µg/mL.

Predict MW: 39 kDa

Observed MW: 39 kDa



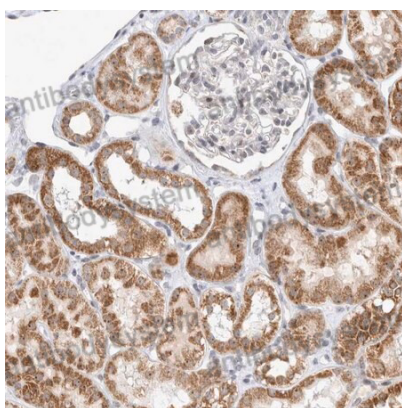
Various lysates were subjected to SDS PAGE followed by western blot with MRPL37 antibody (PHK47801) at 1 µg/ml.

Lane 1: HT29

Second Ab: Goat Anti-Rabbit IgG H&L Polyclonal antibody, HRP (PTB96431) at 0.1 µg/mL.

Predict MW: 48 kDa

Observed MW: 48 kDa



Immunohistochemical

Immunohistochemical analysis of human kidney tissue stained for MRPL37 with PHK47801.