

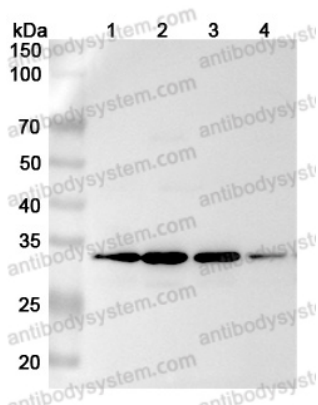
# Anti-Human METTL1 Polyclonal Antibody

## Summary

---

<b>Catalog No.</b>	PHK47701
<b>Host species</b>	Rabbit
<b>Tested applications</b>	ELISA: 1:4000-1:8000, IHC: 1:50-1:100, WB: 1:1000-1:4000
<b>Species reactivity</b>	Human
<b>Immunogen</b>	E. coli - derived recombinant Human METTL1 (Thr34-His276).
<b>Form</b>	Liquid
<b>Storage buffer</b>	0.01M PBS, pH 7.4, 50% Glycerol, 0.05% Proclin 300.
<b>Clonality</b>	Polyclonal
<b>Isotype</b>	IgG
<b>Applications</b>	ELISA, IHC, WB
<b>Target</b>	miRNA (guanine-N(7)-)-methyltransferase, Methyltransferase-like protein 1, tRNA (guanine-N(7)-)-methyltransferase, mRNA (guanine-N(7)-)-methyltransferase, C12orf1, tRNA (guanine(46)-N(7))-methyltransferase, METTL1, tRNA(m7G46)-methyltransferase
<b>Purification</b>	Purified by antigen affinity column.
<b>Accession</b>	Q9UBP6
<b>Stability and Storage</b>	Use a manual defrost freezer and avoid repeated freeze thaw cycles. Store at 2 to 8°C for frequent use. Store at -20 to -80°C for twelve months from the date of receipt.
<b>Note</b>	For research use only.

## Data Image



Western Blot

Various lysates were subjected to SDS PAGE followed by western blot with METTL1 antibody (PHK47701) at 1 $\mu$ g/ml.

Lane 1: A549 cell lysate

Lane 2: 293T cell lysate

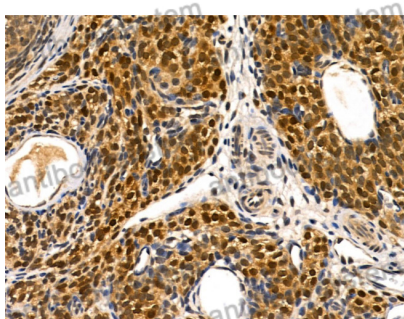
Lane 3: HepG2 cell lysate

Lane 4: Jurkat cell lysate

Second Ab: Goat Anti-Rabbit IgG H&L Polyclonal antibody, HRP (PTB96431) at 0.1  $\mu$ g/mL.

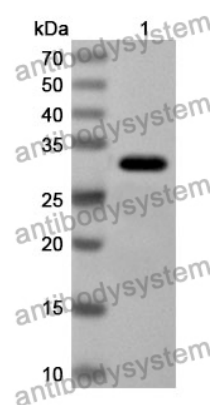
Predict MW: 31 kDa

Observed MW: 31 kDa



Immunohistochemical

Immunohistochemical analysis of rat ovary stained for METTL1 with PHK47701.



Western Blot

Recombinant Protein lysates were subjected to SDS PAGE followed by western blot with METTL1 antibody (PHK47701) at 1  $\mu$ g/ml.

Lane 1: Recombinant Protein

Second Ab: Goat Anti-Rabbit IgG H&L Polyclonal antibody, HRP (PTB96431) at 0.1  $\mu$ g/mL.

Predict MW: 30 kDa

Observed MW: 30 kDa