

Anti-Human MDH2 Polyclonal Antibody

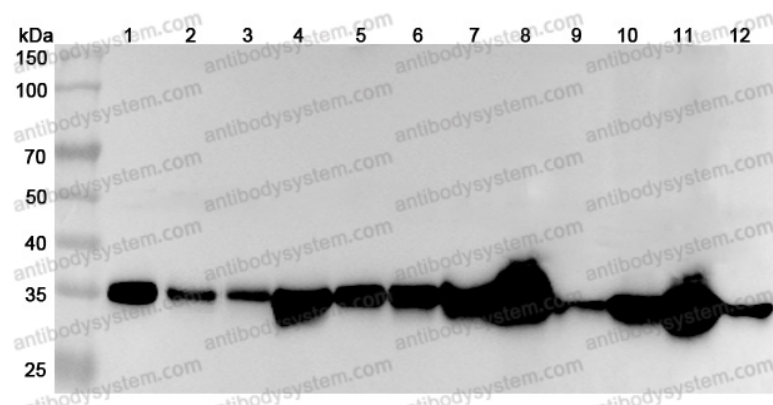
Summary

Catalog No.	PHE28201
Host species	Rabbit
Tested applications	ELISA: 1:4000-1:8000, IHC: 1:50-1:100, WB: 1:1000-1:4000
Species reactivity	Human
Immunogen	E. coli - derived recombinant Human MDH2 (Asn24-Lys338).
Form	Liquid
Storage buffer	0.01M PBS, pH 7.4, 50% Glycerol, 0.05% Proclin 300.
Clonality	Polyclonal
Isotype	IgG
Applications	ELISA, IHC, WB
Target	Malate dehydrogenase, mitochondrial, MDH2
Purification	Purified by antigen affinity column.
Accession	P40926
Stability and Storage	Use a manual defrost freezer and avoid repeated freeze thaw cycles. Store at 2 to 8°C for frequent use. Store at -20 to -80°C for twelve months from the date of receipt.
Note	For research use only.

Data Image

Various lysates were subjected to SDS PAGE followed by western blot with MDH2 antibody (PHE28201) at 1µg/ml.

- Lane 1: Hela cell lysate
- Lane 2: U87 cell lysate
- Lane 3: NIH3T3 cell lysate
- Lane 4: A549 cell lysate
- Lane 5: HepG2 cell lysate
- Lane 6: Jurkat cell lysate
- Lane 7: Mouse kidney lysate
- Lane 8: Mouse heart lysate
- Lane 9: Mouse skeletal muscle lysate
- Lane 10: Rat kidney lysate
- Lane 11: Rat heart lysate
- Lane 12: Rat skeletal muscle lysate

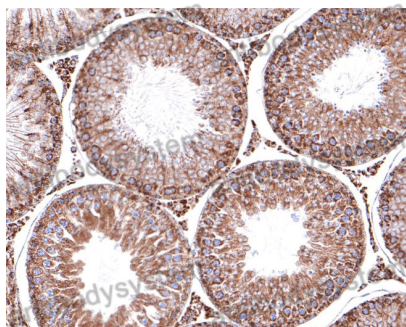


Western Blot

Second Ab: Goat Anti-Rabbit IgG H&L
Polyclonal antibody, HRP (PTB96431) at 0.1 µg/mL.

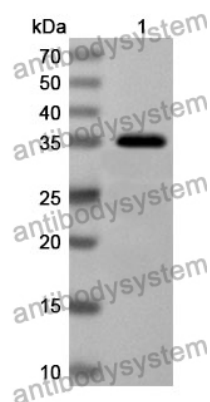
Predict MW: 36 kDa

Observed MW: 36 kDa



Immunohistochemical

Immunohistochemical analysis of rat testis stained for MDH2 with PHE28201.



Western Blot

Recombinant Protein lysates were subjected to SDS PAGE followed by western blot with MDH2 antibody (PHE28201) at 1 μ g/ml.

Lane 1: Recombinant Protein

Second Ab: Goat Anti-Rabbit IgG H&L Polyclonal antibody, HRP (PTB96431) at 0.1 μ g/mL.

Predict MW: 35 kDa

Observed MW: 35 kDa