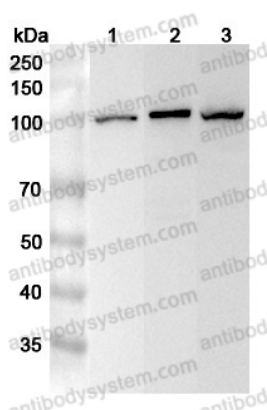


Anti-Human MCM3 Polyclonal Antibody

Summary

Catalog No.	PHD66501
Host species	Rabbit
Tested applications	ELISA: 1:4000-1:8000, IHC: 1:50-1:100, WB: 1:1000-1:4000
Species reactivity	Human
Immunogen	E. coli - derived recombinant Human MCM3 (Ser118-Lys656).
Form	Liquid
Storage buffer	0.01M PBS, pH 7.4, 50% Glycerol, 0.05% Proclin 300.
Clonality	Polyclonal
Isotype	IgG
Applications	ELISA, IHC, WB
Target	p102, MCM3, DNA replication licensing factor MCM3, RLF subunit beta, DNA polymerase alpha holoenzyme-associated protein P1, P1-MCM3
Purification	Purified by antigen affinity column.
Accession	P25205
Stability and Storage	Use a manual defrost freezer and avoid repeated freeze thaw cycles. Store at 2 to 8°C for frequent use. Store at -20 to -80°C for twelve months from the date of receipt.
Note	For research use only.

Data Image



Western Blot

Various lysates were subjected to SDS PAGE followed by western blot with MCM3 antibody (PHD66501) at 1 μ g/ml.

Lane 1: K562 cell lysate

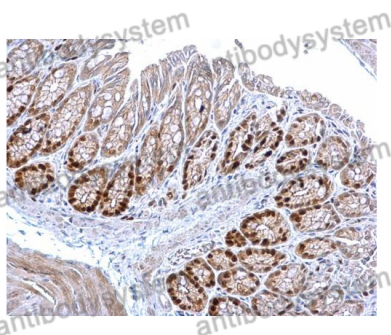
Lane 2: Raji cell lysate

Lane 3: 293T cell lysate

Second Ab: Goat Anti-Rabbit IgG H&L Polyclonal antibody, HRP (PTB96431) at 0.1 μ g/mL.

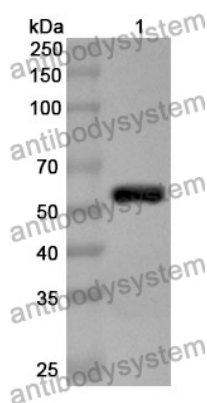
Predict MW: 91 kDa

Observed MW: 105 kDa



Immunohistochemical

Immunohistochemical analysis of mouse colon tissue stained for MCM3 with PHD66501.



Western Blot

Recombinant Protein lysates were subjected to SDS PAGE followed by western blot with MCM3 antibody (PHD66501) at 1 μ g/ml.

Lane 1: Recombinant Protein

Second Ab: Goat Anti-Rabbit IgG H&L Polyclonal antibody, HRP (PTB96431) at 0.1 μ g/mL.

Predict MW: 62 kDa

Observed MW: 62 kDa