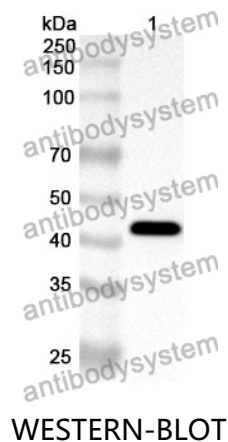


Anti-Human ATP6V0D1 Polyclonal Antibody

Summary

Catalog No.	PHF43001
Host species	Rabbit
Tested applications	ELISA: 1:4000-1:8000, IHC: 1:50-1:100, WB: 1:1000-1:4000
Species reactivity	Human
Immunogen	E. coli - derived recombinant Human ATP6V0D1 (Met1-Phe351).
Form	Liquid
Storage buffer	0.01M PBS, pH 7.4, 50% Glycerol, 0.05% Proclin 300.
Clonality	Polyclonal
Isotype	IgG
Applications	ELISA, IHC, WB
Target	V-ATPase AC39 subunit, V-ATPase subunit d 1, ATP6D, V-type proton ATPase subunit d 1, VPATPD, Vacuolar proton pump subunit d 1, ATP6V0D1, V-ATPase 40 kDa accessory protein, 32 kDa accessory protein, p39
Purification	Purified by antigen affinity column.
Accession	P61421
Stability and Storage	Use a manual defrost freezer and avoid repeated freeze thaw cycles. Store at 2 to 8°C for frequent use. Store at -20 to -80°C for twelve months from the date of receipt.
Note	For research use only.

Data Image



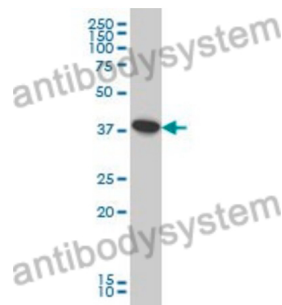
Recombinant Protein lysates were subjected to SDS PAGE followed by western blot with ATP6V0D1 antibody (PHF43001) at 1 µg/ml.

Lane 1: Recombinant protein

Second Ab: Goat Anti-Rabbit IgG H&L Polyclonal antibody, HRP (PTB96431) at 0.1 µg/mL.

Predict MW: 42 kDa

Observed MW: 42 kDa



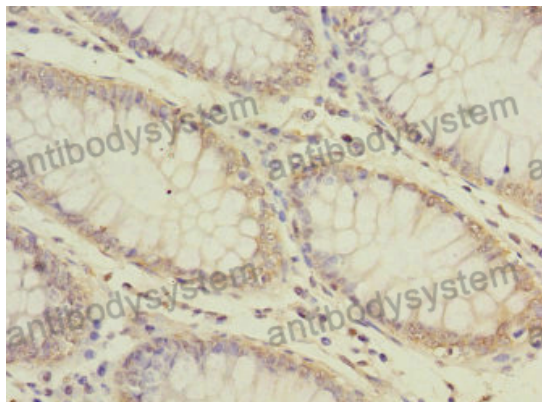
Various lysates were subjected to SDS PAGE followed by western blot with ATP6V0D1 antibody (PHF43001) at 1 µg/ml.

Lane 1: Hela

Second Ab: Goat Anti-Rabbit IgG H&L Polyclonal antibody, HRP (PTB96431) at 0.1 µg/mL.

Predict MW: 40 kDa

Observed MW: 40 kDa



Immunohistochemical

Immunohistochemical analysis of human colon cancer tissue stained for ATP6V0D1 with PHF43001.