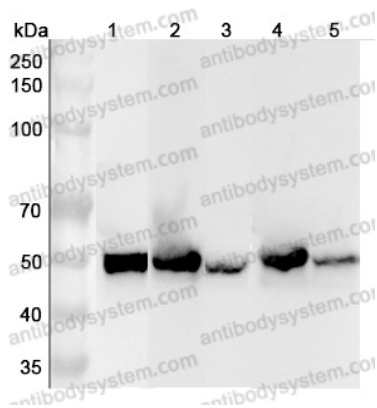


Anti-Human ALDH1A3 Polyclonal Antibody

Summary

Catalog No.	PHE52801
Host species	Rabbit
Tested applications	ELISA: 1:4000-1:8000, IHC: 1:50-1:100, WB: 1:1000-1:4000
Species reactivity	Human
Immunogen	E. coli - derived recombinant Human ALDH1A3 (Lys33-Pro512).
Form	Liquid
Storage buffer	0.01M PBS, pH 7.4, 50% Glycerol, 0.05% Proclin 300.
Clonality	Polyclonal
Isotype	IgG
Applications	ELISA, IHC, WB
Target	Aldehyde dehydrogenase family 1 member A3, Aldehyde dehydrogenase 6, ALDH1A3, RalDH3, ALDH6, Retinaldehyde dehydrogenase 3, RALDH-3
Purification	Purified by antigen affinity column.
Accession	P47895
Stability and Storage	Use a manual defrost freezer and avoid repeated freeze thaw cycles. Store at 2 to 8°C for frequent use. Store at -20 to -80°C for twelve months from the date of receipt.
Note	For research use only.

Data Image



Western Blot

Various lysates were subjected to SDS PAGE followed by western blot with ALDH1A3 antibody (PHE52801) at 1 μ g/ml.

Lane 1: A549 cell lysate

Lane 2: Mouse liver lysate

Lane 3: Mouse kidney lysate

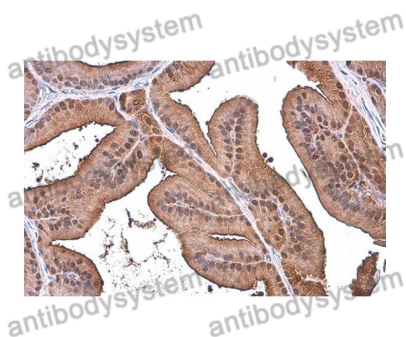
Lane 4: Rat liver lysate

Lane 5: Rat kidney lysate

Second Ab: Goat Anti-Rabbit IgG H&L Polyclonal antibody, HRP (PTB96431) at 0.1 μ g/mL.

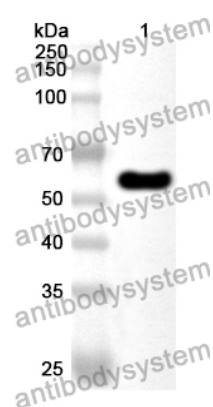
Predict MW: 56 kDa

Observed MW: 50 kDa



Immunohistochemical

Immunohistochemical analysis of rat prostate stained for ALDH1A3 with PHE52801.



Western Blot

Recombinant Protein lysates were subjected to SDS PAGE followed by western blot with ALDH1A3 antibody (PHE52801) at 1 µg/ml.

Lane 1: Recombinant Protein

Second Ab: Goat Anti-Rabbit IgG H&L Polyclonal antibody, HRP (PTB96431) at 0.1 µg/mL.

Predict MW: 55 kDa

Observed MW: 55 kDa