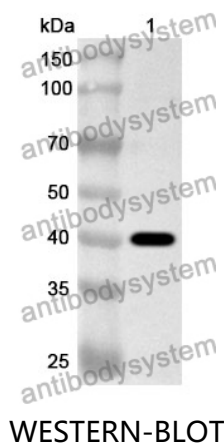


Anti-Human SPTLC2 Polyclonal Antibody

Summary

Catalog No.	PHA48101
Host species	Rabbit
Tested applications	ELISA: 1:4000-1:8000, IHC: 1:50-1:100, WB: 1:1000-1:4000
Species reactivity	Human
Immunogen	E. coli - derived recombinant Human SPTLC2 (Gly186-Gln536).
Form	Liquid
Storage buffer	0.01M PBS, pH 7.4, 50% Glycerol, 0.05% Proclin 300.
Clonality	Polyclonal
Isotype	IgG
Applications	ELISA, IHC, WB
Target	LCB2a, SPT 2, Serine palmitoyltransferase 2, LCB 2, KIAA0526, Long chain base biosynthesis protein 2, SPTLC2, LCB2, Long chain base biosynthesis protein 2a, Serine-palmitoyl-CoA transferase 2
Purification	Purified by antigen affinity column.
Accession	O15270
Stability and Storage	Use a manual defrost freezer and avoid repeated freeze thaw cycles. Store at 2 to 8°C for frequent use. Store at -20 to -80°C for twelve months from the date of receipt.
Note	For research use only.

Data Image



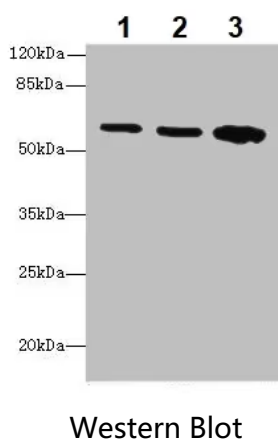
Recombinant Protein lysates were subjected to SDS PAGE followed by western blot with SPTLC2 antibody (PHA48101) at 1 µg/ml.

Lane 1: Recombinant protein

Second Ab: Goat Anti-Rabbit IgG H&L Polyclonal antibody, HRP (PTB96431) at 0.1 µg/mL.

Predict MW: 41 kDa

Observed MW: 41 kDa



Various lysates were subjected to SDS PAGE followed by western blot with SPTLC2 antibody (PHA48101) at 1 µg/ml.

Lane 1: HepG2

Lane 2: A549

Lane 3: HT-29

Second Ab: Goat Anti-Rabbit IgG H&L Polyclonal antibody, HRP (PTB96431) at 0.1 µg/mL.

Predict MW: 63 kDa

Observed MW: 63 kDa



Immunohistochemical

Immunohistochemical analysis of human lymph carcinoma stained for SPTLC2 with PHA48101.