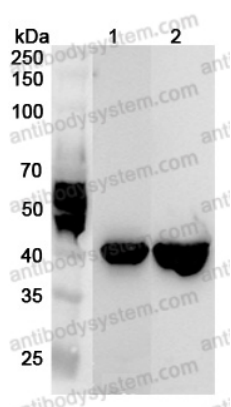


Anti-Human RBM4 Polyclonal Antibody

Summary

Catalog No.	PHK46501
Host species	Rabbit
Tested applications	ELISA: 1:4000-1:8000, IHC: 1:50-1:100, WB: 1:1000-1:4000
Species reactivity	Human
Immunogen	E. coli - derived recombinant Human RBM4 (Met1-Ser146).
Form	Liquid
Storage buffer	0.01M PBS, pH 7.4, 50% Glycerol, 0.05% Proclin 300.
Clonality	Polyclonal
Isotype	IgG
Applications	ELISA, IHC, WB
Target	RBM4A, Lark homolog, RNA-binding protein 4, RNA-binding motif protein 4a, RBM4, hLark, RNA-binding motif protein 4
Purification	Purified by antigen affinity column.
Accession	Q9BWF3
Stability and Storage	Use a manual defrost freezer and avoid repeated freeze thaw cycles. Store at 2 to 8°C for frequent use. Store at -20 to -80°C for twelve months from the date of receipt.
Note	For research use only.

Data Image



Western Blot

Various lysates were subjected to SDS PAGE followed by western blot with RBM4 antibody (PHK46501) at 1 µg/ml.

Lane 1: Mouse heart lysate

Lane 2: Rat heart lysate

Second Ab: Goat Anti-Rabbit IgG H&L Polyclonal antibody, HRP (PTB96431) at 0.1 µg/mL.

Predict MW: 40 kDa

Observed MW: 40 kDa



Immunohistochemical

Immunohistochemical analysis of human cerebral cortex stained for RBM4 with PHK46501.



Western Blot

Recombinant Protein lysates were subjected to SDS PAGE followed by western blot with RBM4 antibody (PHK46501) at 1 µg/ml.

Lane 1: Recombinant Protein

Second Ab: Goat Anti-Rabbit IgG H&L Polyclonal antibody, HRP (PTB96431) at 0.1 µg/mL.

Predict MW: 19 kDa

Observed MW: 19 kDa