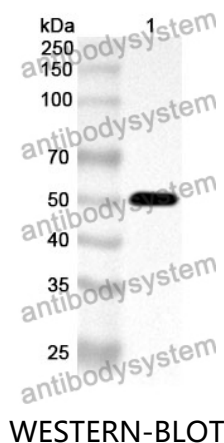


Anti-Human GSPT1 Polyclonal Antibody

Summary

Catalog No.	PHD09301
Host species	Rabbit
Tested applications	ELISA: 1:4000-1:8000, IHC: 1:50-1:100, WB: 1:1000-1:4000
Species reactivity	Human
Immunogen	E. coli - derived recombinant Human GSPT1 (Lys71-Asp499).
Form	Liquid
Storage buffer	0.01M PBS, pH 7.4, 50% Glycerol, 0.05% Proclin 300.
Clonality	Polyclonal
Isotype	IgG
Applications	ELISA, IHC, WB
Target	Eukaryotic peptide chain release factor subunit 3a, GSPT1, Eukaryotic peptide chain release factor GTP-binding subunit ERF3A, G1 to S phase transition protein 1 homolog, eRF3a, ERF3A
Purification	Purified by antigen affinity column.
Accession	P15170
Stability and Storage	Use a manual defrost freezer and avoid repeated freeze thaw cycles. Store at 2 to 8°C for frequent use. Store at -20 to -80°C for twelve months from the date of receipt.
Note	For research use only.

Data Image



Recombinant Protein lysates were subjected to SDS PAGE followed by western blot with GSPT1 antibody (PHD09301) at 1 µg/ml.

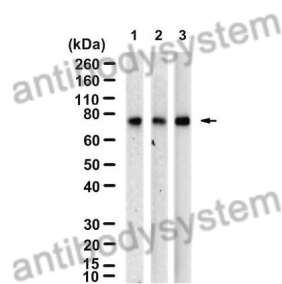
Lane 1: Recombinant protein

Second Ab: Goat Anti-Rabbit IgG H&L Polyclonal antibody, HRP (PTB96431) at 0.1 µg/mL.

Predict MW: 50 kDa

Observed MW: 50 kDa

Various lysates were subjected to SDS PAGE followed by western blot with GSPT1 antibody (PHD09301) at 1 µg/ml.



Lane 1: A549

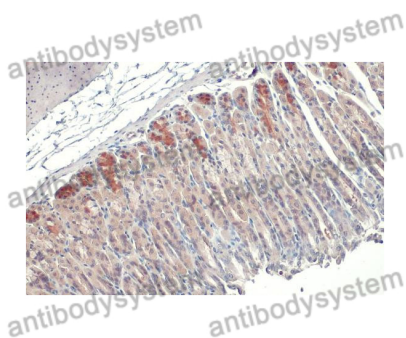
Lane 2: HEK293T

Lane 3: Hela

Second Ab: Goat Anti-Rabbit IgG H&L Polyclonal antibody, HRP (PTB96431) at 0.1 µg/mL.

Predict MW: 56 kDa

Observed MW: 75 kDa



Immunohistochemical analysis of mouse stomach tissue stained for GSPT1 with PHD09301.