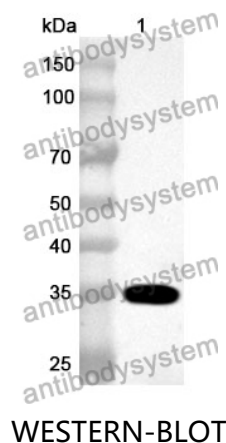


Anti-Human ING2 Polyclonal Antibody

Summary

Catalog No.	PHK44201
Host species	Rabbit
Tested applications	ELISA: 1:4000-1:8000, IHC: 1:50-1:100, WB: 1:1000-1:4000
Species reactivity	Human
Immunogen	E. coli - derived recombinant Human ING2 (Glu204-Glu263).
Form	Liquid
Storage buffer	0.01M PBS, pH 7.4, 50% Glycerol, 0.05% Proclin 300.
Clonality	Polyclonal
Isotype	IgG
Applications	ELISA, IHC, WB
Target	ING2, p32, ING1Lp, p33ING2, Inhibitor of growth protein 2, ING1L, Inhibitor of growth 1-like protein
Purification	Purified by antigen affinity column.
Accession	Q9H160
Stability and Storage	Use a manual defrost freezer and avoid repeated freeze thaw cycles. Store at 2 to 8°C for frequent use. Store at -20 to -80°C for twelve months from the date of receipt.
Note	For research use only.

Data Image



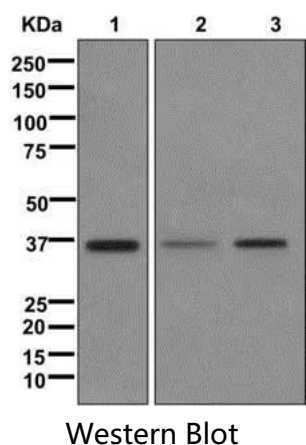
Recombinant Protein lysates were subjected to SDS PAGE followed by western blot with ING2 antibody (PHK44201) at 1 μ g/ml.

Lane 1: Recombinant protein

Second Ab: Goat Anti-Rabbit IgG H&L Polyclonal antibody, HRP (PTB96431) at 0.1 μ g/mL.

Predict MW: 35 kDa

Observed MW: 35 kDa



Various lysates were subjected to SDS PAGE followed by western blot with ING2 antibody (PHK44201) at 1 μ g/ml.

Lane 1: Hela

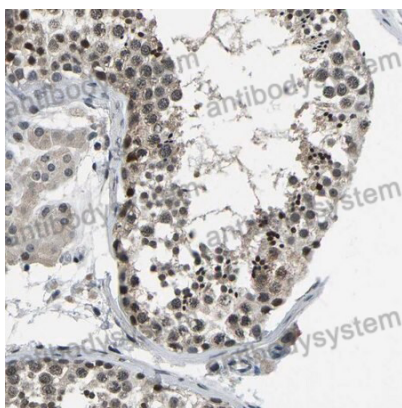
Lane 2: HT-1080

Lane 3: Saos-2

Second Ab: Goat Anti-Rabbit IgG H&L Polyclonal antibody, HRP (PTB96431) at 0.1 μ g/mL.

Predict MW: 33 kDa

Observed MW: 33 kDa



Immunohistochemical

Immunohistochemical analysis of human testis tissue stained for ING2 with PHK44201.