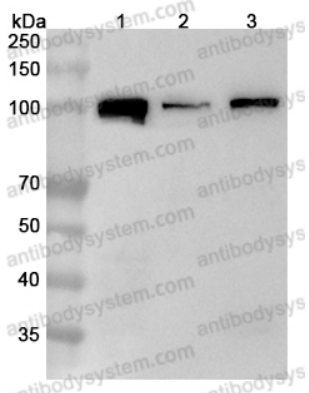


Anti-Human SFPQ Polyclonal Antibody

Summary

Catalog No.	PHD56101
Host species	Rabbit
Tested applications	ELISA: 1:4000-1:8000, IHC: 1:50-1:100, WB: 1:1000-1:4000
Species reactivity	Human
Immunogen	E. coli - derived recombinant Human SFPQ (Lys271-Gly434).
Form	Liquid
Storage buffer	0.01M PBS, pH 7.4, 50% Glycerol, 0.05% Proclin 300.
Clonality	Polyclonal
Isotype	IgG
Applications	ELISA, IHC, WB
Target	Splicing factor, proline- and glutamine-rich, PTB-associated-splicing factor, SFPQ, DNA-binding p52/p100 complex, 100 kDa subunit, Polypyrimidine tract-binding protein-associated-splicing factor, PSF, hPOMp100, 100 kDa DNA-pairing protein
Purification	Purified by antigen affinity column.
Accession	P23246
Stability and Storage	Use a manual defrost freezer and avoid repeated freeze thaw cycles. Store at 2 to 8°C for frequent use. Store at -20 to -80°C for twelve months from the date of receipt.
Note	For research use only.

Data Image



Western Blot

Various lysates were subjected to SDS PAGE followed by western blot with SFPQ antibody (PHD56101) at 1µg/ml.

Lane 1: HepG2 cell lysate

Lane 2: Rat brain lysate

Lane 3: Jurkat cell lysate

Second Ab: Goat Anti-Rabbit IgG H&L Polyclonal antibody, HRP (PTB96431) at 0.1 µg/mL.

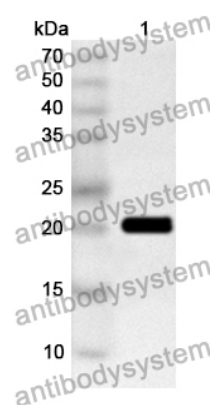
Predict MW: 76 kDa

Observed MW: 100 kDa



Immunohistochemical

Immunohistochemical analysis of mouse cervix stained for SFPQ with PHD56101.



Western Blot

Recombinant Protein lysates were subjected to SDS PAGE followed by western blot with SFPQ antibody (PHD56101) at 1 μ g/ml.

Lane 1: Recombinant Protein

Second Ab: Goat Anti-Rabbit IgG H&L Polyclonal antibody, HRP (PTB96431) at 0.1 μ g/mL.

Predict MW: 21 kDa

Observed MW: 21 kDa