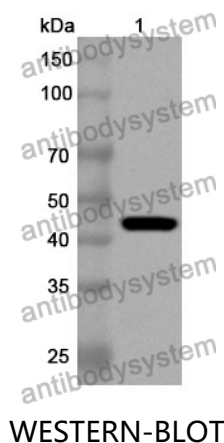


Anti-Human ARHGEF25 Polyclonal Antibody

Summary

Catalog No.	PHK43701
Host species	Rabbit
Tested applications	ELISA: 1:4000-1:8000, IHC: 1:50-1:100, WB: 1:1000-1:4000
Species reactivity	Human
Immunogen	E. coli - derived recombinant Human ARHGEF25 (Ser149-Ser490).
Form	Liquid
Storage buffer	0.01M PBS, pH 7.4, 50% Glycerol, 0.05% Proclin 300.
Clonality	Polyclonal
Isotype	IgG
Applications	ELISA, IHC, WB
Target	Rho guanine nucleotide exchange factor 25, p63RhoGEF, GEFT, Guanine nucleotide exchange factor GEFT, RhoA/Rac/Cdc42 guanine nucleotide exchange factor GEFT, Rac/Cdc42/Rho exchange factor GEFT, ARHGEF25
Purification	Purified by antigen affinity column.
Accession	Q86VW2
Stability and Storage	Use a manual defrost freezer and avoid repeated freeze thaw cycles. Store at 2 to 8°C for frequent use. Store at -20 to -80°C for twelve months from the date of receipt.
Note	For research use only.

Data Image



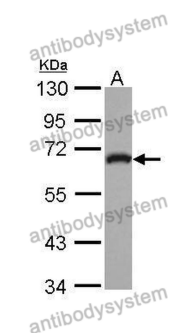
Recombinant Protein lysates were subjected to SDS PAGE followed by western blot with ARHGEF25 antibody (PHK43701) at 1 µg/ml.

Lane 1: Recombinant protein

Second Ab: Goat Anti-Rabbit IgG H&L Polyclonal antibody, HRP (PTB96431) at 0.1 µg/mL.

Predict MW: 42 kDa

Observed MW: 42 kDa



Various lysates were subjected to SDS PAGE followed by western blot with ARHGEF25 antibody (PHK43701) at 1 µg/ml.

Lane 1: IMR32

Second Ab: Goat Anti-Rabbit IgG H&L Polyclonal antibody, HRP (PTB96431) at 0.1 µg/mL.

Predict MW: 64 kDa

Observed MW: 68 kDa