

Anti-Human SUCLA2 Polyclonal Antibody

Summary

Catalog No.	PHK43501
Host species	Rabbit
Tested applications	ELISA: 1:4000-1:8000, IHC: 1:50-1:100, WB: 1:1000-1:4000
Species reactivity	Human
Immunogen	E. coli - derived recombinant Human SUCLA2 (Ser54-Glu445).
Form	Liquid
Storage buffer	0.01M PBS, pH 7.4, 50% Glycerol, 0.05% Proclin 300.
Clonality	Polyclonal
Isotype	IgG
Applications	ELISA, IHC, WB
Target	ATP-specific succinyl-CoA synthetase subunit beta, SCS-betaA, Succinate--CoA ligase [ADP-forming] subunit beta, mitochondrial, A-SCS, Succinyl-CoA synthetase beta-A chain, SUCLA2
Purification	Purified by antigen affinity column.
Accession	Q9P2R7
Stability and Storage	Use a manual defrost freezer and avoid repeated freeze thaw cycles. Store at 2 to 8°C for frequent use. Store at -20 to -80°C for twelve months from the date of receipt.
Note	For research use only.

Data Image

Various lysates were subjected to SDS PAGE followed by western blot with SUCLA2 antibody (PHK43501) at 1µg/ml.

Lane 1: SH-SY5Y cell lysate

Lane 2: HepG2 cell lysate

Lane 3: PC3 cell lysate

Lane 4: LO2 cell lysate

Lane 5: Hela cell lysate

Lane 6: 293T cell lysate

Lane 7: Mouse brain lysate

Lane 8: Mouse liver lysate

Lane 9: Mouse heart lysate

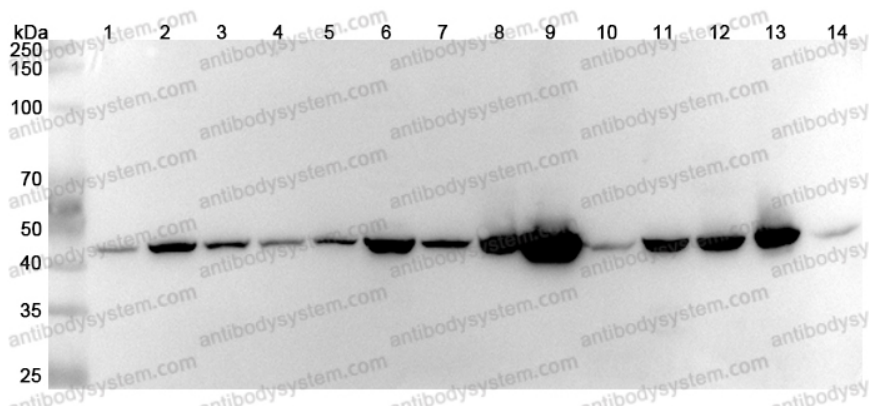
Lane 10: Mouse spleen lysate

Lane 11: Rat brain lysate

Lane 12: Rat liver lysate

Lane 13: Rat heart lysate

Lane 14: Rat spleen lysate

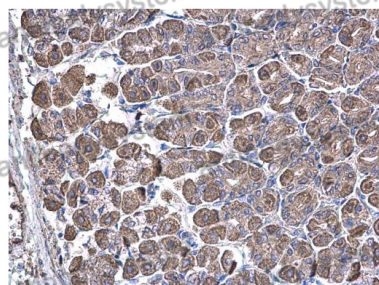


Western Blot

Second Ab: Goat Anti-Rabbit IgG H&L Polyclonal antibody, HRP (PTB96431) at 0.1 µg/mL.

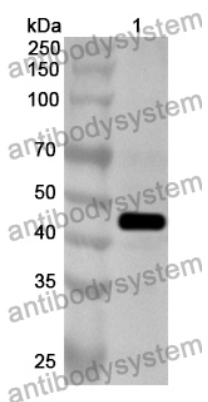
Predict MW: 50 kDa

Observed MW: 43 kDa



Immunohistochemical analysis of mouse stomach tissue stained for SUCLA2 with PHK43501.

Immunohistochemical



Western Blot

Recombinant Protein lysates were subjected to SDS PAGE followed by western blot with SUCLA2 antibody (PHK43501) at 1 µg/ml.

Lane 1: Recombinant Protein

Second Ab: Goat Anti-Rabbit IgG H&L Polyclonal antibody, HRP (PTB96431) at 0.1 µg/mL.

Predict MW: 45 kDa

Observed MW: 45 kDa