

# Anti-Human MCM6 Polyclonal Antibody

## Summary

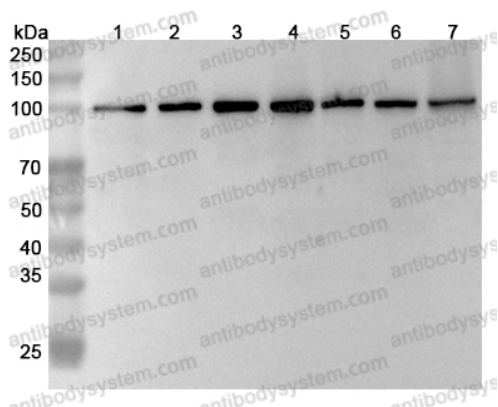
---

<b>Catalog No.</b>	PHG83001
<b>Host species</b>	Rabbit
<b>Tested applications</b>	ELISA: 1:4000-1:8000, IHC: 1:50-1:100, WB: 1:1000-1:4000
<b>Species reactivity</b>	Human
<b>Immunogen</b>	E. coli - derived recombinant Human MCM6 (Arg190-Thr661).
<b>Form</b>	Liquid
<b>Storage buffer</b>	0.01M PBS, pH 7.4, 50% Glycerol, 0.05% Proclin 300.
<b>Clonality</b>	Polyclonal
<b>Isotype</b>	IgG
<b>Applications</b>	ELISA, IHC, WB
<b>Target</b>	DNA replication licensing factor MCM6, p105MCM, MCM6
<b>Purification</b>	Purified by antigen affinity column.
<b>Accession</b>	Q14566
<b>Stability and Storage</b>	Use a manual defrost freezer and avoid repeated freeze thaw cycles. Store at 2 to 8°C for frequent use. Store at -20 to -80°C for twelve months from the date of receipt.
<b>Note</b>	For research use only.

## Data Image

---

Various lysates were subjected to SDS PAGE followed by western blot with MCM6 antibody (PHG83001) at 1 $\mu$ g/ml.



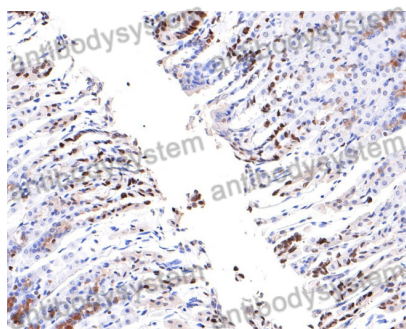
Western Blot

Lane 1: HL60 cell lysate  
Lane 2: Hela cell lysate  
Lane 3: Jurkat cell lysate  
Lane 4: HepG2 cell lysate  
Lane 5: PC12 cell lysate  
Lane 6: NIH3T3 cell lysate  
Lane 7: Mouse spleen lysate

Second Ab: Goat Anti-Rabbit IgG H&L Polyclonal antibody, HRP (PTB96431) at 0.1  $\mu$ g/mL.

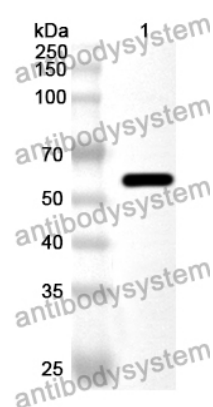
Predict MW: 93 kDa

Observed MW: 100 kDa



Immunohistochemical

Immunohistochemical analysis of mouse stomach stained for MCM6 with PHG83001.



Western Blot

Recombinant Protein lysates were subjected to SDS PAGE followed by western blot with MCM6 antibody (PHG83001) at 1 µg/ml.

Lane 1: Recombinant Protein

Second Ab: Goat Anti-Rabbit IgG H&L Polyclonal antibody, HRP (PTB96431) at 0.1 µg/mL.

Predict MW: 55 kDa

Observed MW: 55 kDa