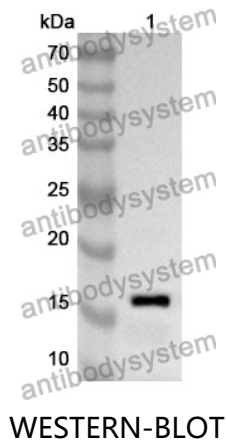


Anti-Human MARCHF8 Polyclonal Antibody

Summary

Catalog No.	PHK43101
Host species	Rabbit
Tested applications	ELISA: 1:4000-1:8000, IHC: 1:50-1:100, WB: 1:1000-1:4000
Species reactivity	Human
Immunogen	E. coli - derived recombinant Human MARCHF8 (Ser13-Lys137).
Form	Liquid
Storage buffer	0.01M PBS, pH 7.4, 50% Glycerol, 0.05% Proclin 300.
Clonality	Polyclonal
Isotype	IgG
Applications	ELISA, IHC, WB
Target	Cellular modulator of immune recognition, E3 ubiquitin-protein ligase MARCHF8, MARCH-VIII, MIR, RING finger protein 178, MARCHF8, Membrane-associated RING-CH protein VIII, c-MIR, MARCH8, Membrane-associated RING finger protein 8, RNF178, RING-type E3 ubiquitin transferase MARCHF8
Purification	Purified by antigen affinity column.
Accession	Q5T0T0
Stability and Storage	Use a manual defrost freezer and avoid repeated freeze thaw cycles. Store at 2 to 8°C for frequent use. Store at -20 to -80°C for twelve months from the date of receipt.
Note	For research use only.

Data Image



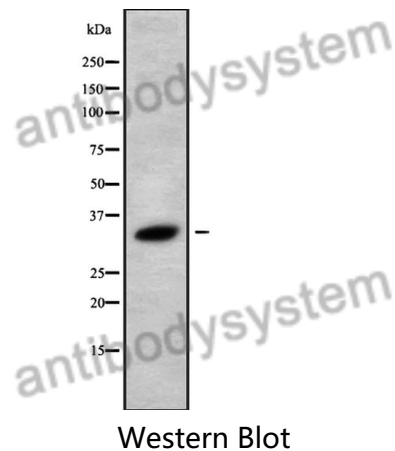
Recombinant Protein lysates were subjected to SDS PAGE followed by western blot with MARCHF8 antibody (PHK43101) at 1 μ g/ml.

Lane 1: Recombinant protein

Second Ab: Goat Anti-Rabbit IgG H&L Polyclonal antibody, HRP (PTB96431) at 0.1 μ g/mL.

Predict MW: 16 kDa

Observed MW: 16 kDa



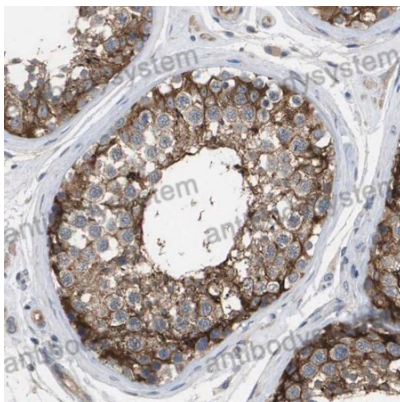
Various lysates were subjected to SDS PAGE followed by western blot with MARCHF8 antibody (PHK43101) at 1 μ g/ml.

Lane 1: HUVEC

Second Ab: Goat Anti-Rabbit IgG H&L Polyclonal antibody, HRP (PTB96431) at 0.1 μ g/mL.

Predict MW: 33 kDa

Observed MW: 33 kDa



Immunohistochemical

Immunohistochemical analysis of human testis tissue stained for MARCHF8 with PHK43101.