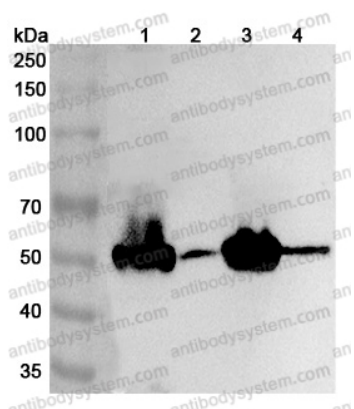


Anti-Human LMOD3 Polyclonal Antibody

Summary

Catalog No.	PHG23501
Host species	Rabbit
Tested applications	ELISA: 1:4000-1:8000, IHC: 1:50-1:100, WB: 1:1000-1:4000
Species reactivity	Human
Immunogen	E. coli - derived recombinant Human LMOD3 (Asn237-Gln409).
Form	Liquid
Storage buffer	0.01M PBS, pH 7.4, 50% Glycerol, 0.05% Proclin 300.
Clonality	Polyclonal
Isotype	IgG
Applications	ELISA, IHC, WB
Target	LMOD3, Leiomodin-3, Leiomodin, fetal form
Purification	Purified by antigen affinity column.
Accession	Q0VAK6
Stability and Storage	Use a manual defrost freezer and avoid repeated freeze thaw cycles. Store at 2 to 8°C for frequent use. Store at -20 to -80°C for twelve months from the date of receipt.
Note	For research use only.

Data Image



Western Blot

Various lysates were subjected to SDS PAGE followed by western blot with ZFYVE27 antibody (PHG23501) at 1µg/ml.

Lane 1: Mouse brain lysate

Lane 2: Mouse eye lysate

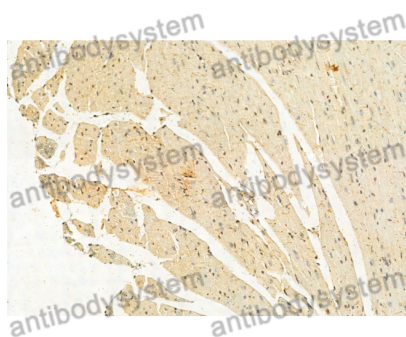
Lane 3: Rat brain lysate

Lane 4: Rat eye lysate

Second Ab: Goat Anti-Rabbit IgG H&L Polyclonal antibody, HRP (PTB96431) at 0.1 µg/mL.

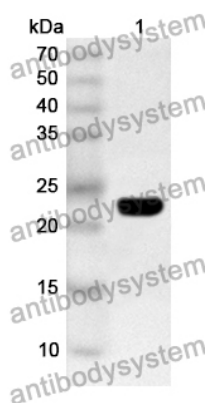
Predict MW: 46 kDa

Observed MW: 50 kDa



Immunohistochemical analysis of mouse heart stained for LMOD3 with PHG23501.

Immunohistochemical



Western Blot

Recombinant Protein lysates were subjected to SDS PAGE followed by western blot with LMOD3 antibody (PHG23501) at 1 µg/ml.

Lane 1: Recombinant Protein

Second Ab: Goat Anti-Rabbit IgG H&L Polyclonal antibody, HRP (PTB96431) at 0.1 µg/mL.

Predict MW: 22 kDa

Observed MW: 22 kDa