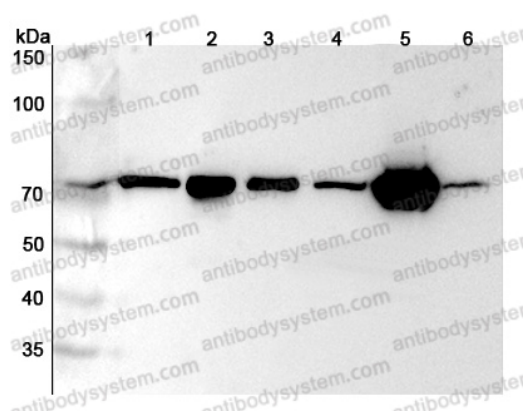


Anti-Human LMNB2 Polyclonal Antibody

Summary

Catalog No.	PHF98701
Host species	Rabbit
Tested applications	ELISA: 1:4000-1:8000, IHC: 1:50-1:100, WB: 1:1000-1:4000
Species reactivity	Human
Immunogen	E. coli - derived recombinant Human LMNB2 (Gly461-Ser581).
Form	Liquid
Storage buffer	0.01M PBS, pH 7.4, 50% Glycerol, 0.05% Proclin 300.
Clonality	Polyclonal
Isotype	IgG
Applications	ELISA, IHC, WB
Target	LMN2, LMNB2, Lamin-B2
Purification	Purified by antigen affinity column.
Accession	Q03252
Stability and Storage	Use a manual defrost freezer and avoid repeated freeze thaw cycles. Store at 2 to 8°C for frequent use. Store at -20 to -80°C for twelve months from the date of receipt.
Note	For research use only.

Data Image



Western Blot

Various lysates were subjected to SDS PAGE followed by western blot with LMNB2 antibody (PHF98701) at 1 μ g/ml.

Lane 1: HepG2 cell lysate

Lane 2: Raji cell lysate

Lane 3: Jurkat cell lysate

Lane 4: Hela cell lysate

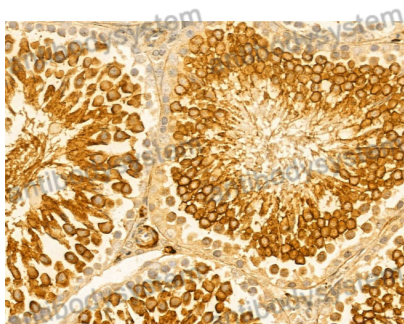
Lane 5: 293T cell lysate

Lane 6: MCF-7 cell lysate

Second Ab: Goat Anti-Rabbit IgG H&L Polyclonal antibody, HRP (PTB96431) at 0.1 μ g/mL.

Predict MW: 70 kDa

Observed MW: 70 kDa



Immunohistochemical

Immunohistochemical analysis of rat testis stained for LMNB2 with PHF98701.



Western Blot

Recombinant Protein lysates were subjected to SDS PAGE followed by western blot with LMNB2 antibody (PHF98701) at 1 µg/ml.

Lane 1: Recombinant Protein

Second Ab: Goat Anti-Rabbit IgG H&L Polyclonal antibody, HRP (PTB96431) at 0.1 µg/mL.

Predict MW: 15 kDa

Observed MW: 15 kDa