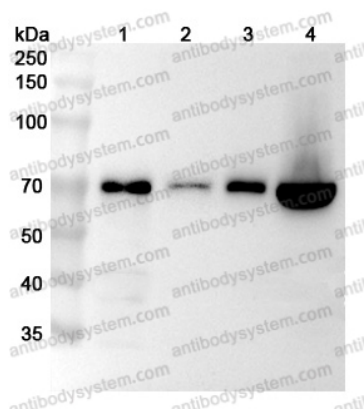


Anti-Human GBP1 Polyclonal Antibody

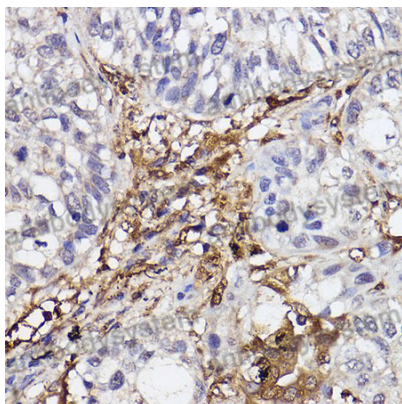
Summary

Catalog No.	PHE00601
Host species	Rabbit
Tested applications	ELISA: 1:4000-1:8000, IHC: 1:50-1:100, WB: 1:1000-1:4000
Species reactivity	Human
Immunogen	E. coli - derived recombinant Human GBP1 (Met1-Ser592).
Form	Liquid
Storage buffer	0.01M PBS, pH 7.4, 50% Glycerol, 0.05% Proclin 300.
Clonality	Polyclonal
Isotype	IgG
Applications	ELISA, IHC, WB
Target	Guanine nucleotide-binding protein 1, HuGBP-1, GBP-1, Interferon-induced guanylate-binding protein 1, GBP1, GTP-binding protein 1, Guanylate-binding protein 1
Purification	Purified by antigen affinity column.
Accession	P32455
Stability and Storage	Use a manual defrost freezer and avoid repeated freeze thaw cycles. Store at 2 to 8°C for frequent use. Store at -20 to -80°C for twelve months from the date of receipt.
Note	For research use only.

Data Image



Western Blot



Immunohistochemical

Various lysates were subjected to SDS PAGE followed by western blot with GBP1 antibody (PHE00601) at 1 μ g/ml.

Lane 1: MDA-MB-231 cell lysate

Lane 2: HUVEC cell lysate

Lane 3: Hela cell lysate

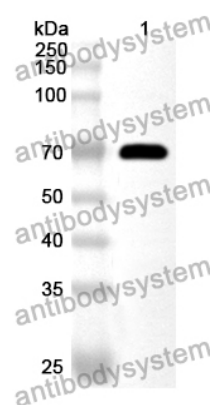
Lane 4: Jurkat cell lysate

Second Ab: Goat Anti-Rabbit IgG H&L Polyclonal antibody, HRP (PTB96431) at 0.1 μ g/mL.

Predict MW: 68 kDa

Observed MW: 68 kDa

Immunohistochemical analysis of human lung carcinoma stained for GBP1 with PHE00601.



Western Blot

Recombinant Protein lysates were subjected to SDS PAGE followed by western blot with GBP1 antibody (PHE00601) at 1 μ g/ml.

Lane 1: Recombinant Protein

Second Ab: Goat Anti-Rabbit IgG H&L Polyclonal antibody, HRP (PTB96431) at 0.1 μ g/mL.

Predict MW: 70 kDa

Observed MW: 70 kDa