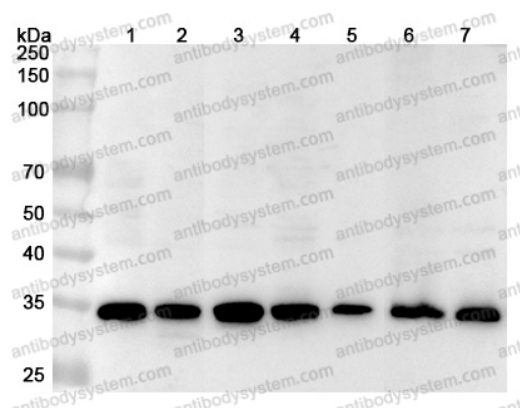


Anti-Human STUB1 Polyclonal Antibody

Summary

| | |
|------------------------------|--|
| Catalog No. | PHK42801 |
| Host species | Rabbit |
| Tested applications | ELISA: 1:4000-1:8000, IHC: 1:50-1:100, WB: 1:1000-1:4000 |
| Species reactivity | Human |
| Immunogen | E. coli - derived recombinant Human STUB1 (Ser23-Tyr303). |
| Form | Liquid |
| Storage buffer | 0.01M PBS, pH 7.4, 50% Glycerol, 0.05% Proclin 300. |
| Clonality | Polyclonal |
| Isotype | IgG |
| Applications | ELISA, IHC, WB |
| Target | Antigen NY-CO-7, CHIP, CLL-associated antigen KW-8, STUB1, Carboxy terminus of Hsp70-interacting protein, STIP1 homology and U box-containing protein 1, E3 ubiquitin-protein ligase CHIP, RING-type E3 ubiquitin transferase CHIP |
| Purification | Purified by antigen affinity column. |
| Accession | Q9UNE7 |
| Stability and Storage | Use a manual defrost freezer and avoid repeated freeze thaw cycles. Store at 2 to 8°C for frequent use. Store at -20 to -80°C for twelve months from the date of receipt. |
| Note | For research use only. |

Data Image



Western Blot

Various lysates were subjected to SDS PAGE followed by western blot with STUB1 antibody (PHK42801) at 1 μ g/ml.

Lane 1: L929 cell lysate

Lane 2: Hela cell lysate

Lane 3: NIH3T3 cell lysate

Lane 4: A549 cell lysate

Lane 5: PC-12 cell lysate

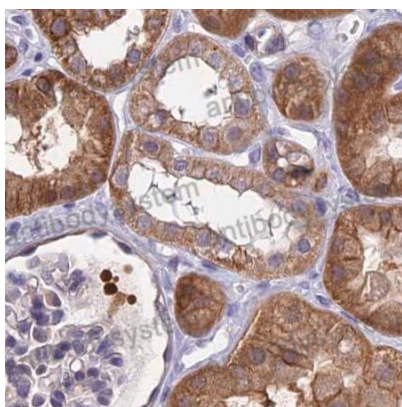
Lane 6: Mouse brain lysate

Lane 7: Rat brain lysate

Second Ab: Goat Anti-Rabbit IgG H&L Polyclonal antibody, HRP (PTB96431) at 0.1 μ g/mL.

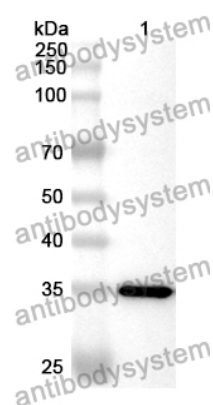
Predict MW: 35 kDa

Observed MW: 35 kDa



Immunohistochemical

Immunohistochemical analysis of human kidney stained for STUB1 with PHK42801.



Western Blot

Recombinant Protein lysates were subjected to SDS PAGE followed by western blot with STUB1 antibody (PHK42801) at 1 μ g/ml.

Lane 1: Recombinant Protein

Second Ab: Goat Anti-Rabbit IgG H&L Polyclonal antibody, HRP (PTB96431) at 0.1 μ g/mL.

Predict MW: 35 kDa

Observed MW: 35 kDa