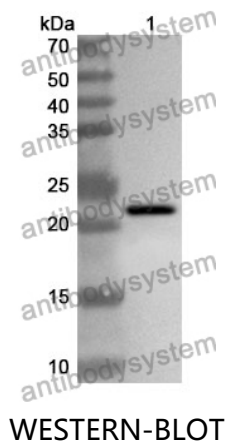


Anti-Human NELFE Polyclonal Antibody

Summary

Catalog No.	PHD30201
Host species	Rabbit
Tested applications	ELISA: 1:4000-1:8000, IHC: 1:50-1:100, WB: 1:1000-1:4000
Species reactivity	Human
Immunogen	E. coli - derived recombinant Human NELFE (Gly261-Arg331).
Form	Liquid
Storage buffer	0.01M PBS, pH 7.4, 50% Glycerol, 0.05% Proclin 300.
Clonality	Polyclonal
Isotype	IgG
Applications	ELISA, IHC, WB
Target	RDBP, RD, NELF-E, RNA-binding protein RD, NELFE, Negative elongation factor E
Purification	Purified by antigen affinity column.
Accession	P18615
Stability and Storage	Use a manual defrost freezer and avoid repeated freeze thaw cycles. Store at 2 to 8°C for frequent use. Store at -20 to -80°C for twelve months from the date of receipt.
Note	For research use only.

Data Image



Recombinant Protein lysates were subjected to SDS PAGE followed by western blot with NELFE antibody (PHD30201) at 1 μ g/ml.

Lane 1: Recombinant protein

Second Ab: Goat Anti-Rabbit IgG H&L Polyclonal antibody, HRP (PTB96431) at 0.1 μ g/mL.

Predict MW: 21 kDa

Observed MW: 21 kDa

Various lysates were subjected to SDS PAGE followed by western blot with NELFE antibody (PHD30201) at 1 μ g/ml.

Lane 1: Hela

Lane 2: T47-D

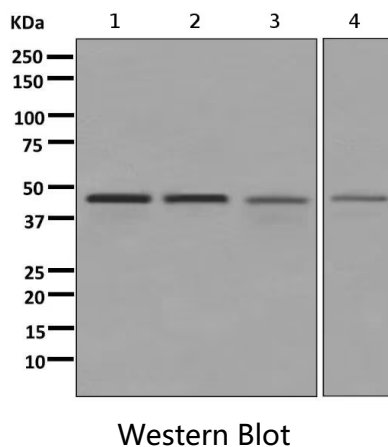
Lane 3: HepG2

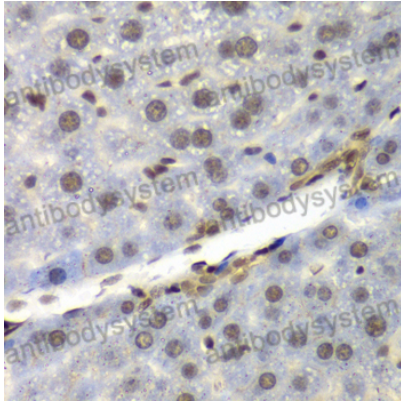
Lane 4: HEK293T

Second Ab: Goat Anti-Rabbit IgG H&L Polyclonal antibody, HRP (PTB96431) at 0.1 μ g/mL.

Predict MW: 44 kDa

Observed MW: 44 kDa





Immunohistochemical analysis of mouse liver tissue stained for NELFE with PHD30201.

Immunohistochemical