

# Anti-Human DNAJB11 Polyclonal Antibody

## Summary

---

<b>Catalog No.</b>	PHK42401
<b>Host species</b>	Rabbit
<b>Tested applications</b>	ELISA: 1:4000-1:8000, IHC: 1:50-1:100, WB: 1:1000-1:4000
<b>Species reactivity</b>	Human
<b>Immunogen</b>	E. coli - derived recombinant Human DNAJB11 (Gly23-Glu333).
<b>Form</b>	Liquid
<b>Storage buffer</b>	0.01M PBS, pH 7.4, 50% Glycerol, 0.05% Proclin 300.
<b>Clonality</b>	Polyclonal
<b>Isotype</b>	IgG
<b>Applications</b>	ELISA, IHC, WB
<b>Target</b>	APOBEC1-binding protein 2, DNAJB11, DnaJ homolog subfamily B member 11, ERj3p, PWP1-interacting protein 4, ER-resident protein ERdj3, ABBP-2, DnaJ protein homolog 9, EDJ, ERJ3, Human DnaJ protein 9, HDJ9, HEDJ, ER-associated DNAJ, ER-associated Hsp40 co-chaperone, ERdj3, Endoplasmic reticulum DNA J domain-containing protein 3, hDj-9
<b>Purification</b>	Purified by antigen affinity column.
<b>Accession</b>	Q9UBS4
<b>Stability and Storage</b>	Use a manual defrost freezer and avoid repeated freeze thaw cycles. Store at 2 to 8°C for frequent use. Store at -20 to -80°C for twelve months from the date of receipt.
<b>Note</b>	For research use only.

## Data Image

Various lysates were subjected to SDS PAGE followed by western blot with DNAJB11 antibody (PHK42401) at 1µg/ml.

Lane 1: Raji cell lysate

Lane 2: Hela cell lysate

Lane 3: HepG2 cell lysate

Lane 4: A549 cell lysate

Lane 5: 293T cell lysate

Lane 6: MCF7 cell lysate

Lane 7: NIH3T3 cell lysate

Lane 8: Mouse heart lysate

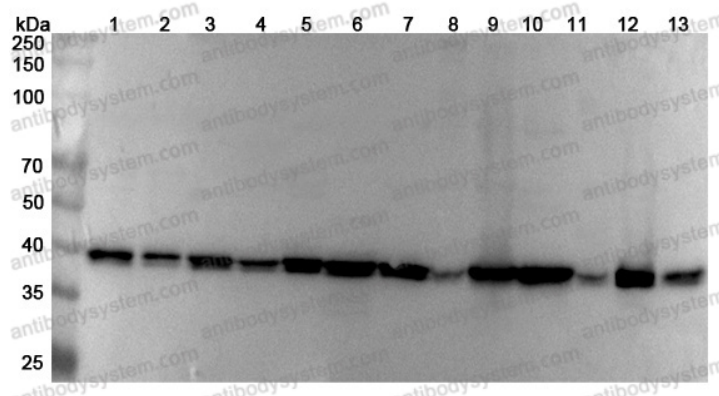
Lane 9: Mouse liver lysate

Lane 10: Mouse lung lysate

Lane 11: Rat heart lysate

Lane 12: Rat liver lysate

Lane 13: Rat lung lysate

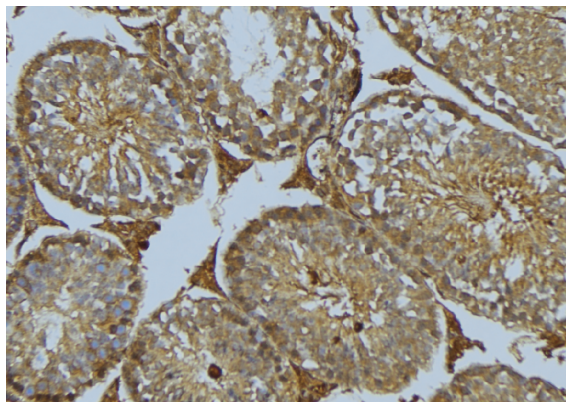


Western Blot

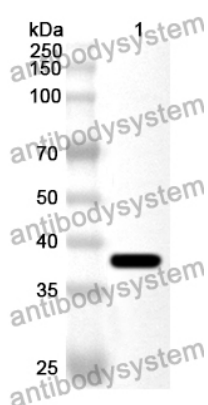
Second Ab: Goat Anti-Rabbit IgG H&L Polyclonal antibody, HRP (PTB96431) at 0.1 µg/mL.

Predict MW: 41 kDa

Observed MW: 41 kDa



Immunohistochemical



Western Blot

Immunohistochemical analysis of mouse testis stained for DNAJB11 with PHK42401.

Recombinant Protein lysates were subjected to SDS PAGE followed by western blot with DNAJB11 antibody (PHK42401) at 1 µg/ml.

Lane 1: Recombinant Protein

Second Ab: Goat Anti-Rabbit IgG H&L Polyclonal antibody, HRP (PTB96431) at 0.1 µg/mL.

Predict MW: 38 kDa

Observed MW: 38 kDa