

# Anti-Human DDX21 Polyclonal Antibody

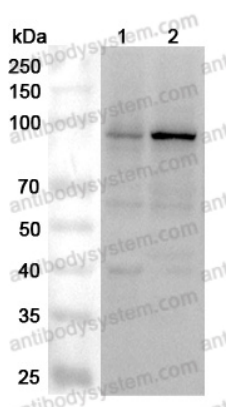
## Summary

---

<b>Catalog No.</b>	PHK42301
<b>Host species</b>	Rabbit
<b>Tested applications</b>	ELISA: 1:4000-1:8000, IHC: 1:50-1:100, WB: 1:1000-1:4000
<b>Species reactivity</b>	Human
<b>Immunogen</b>	E. coli - derived recombinant Human DDX21 (Ala187-Ile563).
<b>Form</b>	Liquid
<b>Storage buffer</b>	0.01M PBS, pH 7.4, 50% Glycerol, 0.05% Proclin 300.
<b>Clonality</b>	Polyclonal
<b>Isotype</b>	IgG
<b>Applications</b>	ELISA, IHC, WB
<b>Target</b>	DEAD box protein 21, DDX21, Gu-alpha, Nucleolar RNA helicase II, RH II/Gu, Nucleolar RNA helicase Gu, Nucleolar RNA helicase 2
<b>Purification</b>	Purified by antigen affinity column.
<b>Accession</b>	Q9NR30
<b>Stability and Storage</b>	Use a manual defrost freezer and avoid repeated freeze thaw cycles. Store at 2 to 8°C for frequent use. Store at -20 to -80°C for twelve months from the date of receipt.
<b>Note</b>	For research use only.

## Data Image

---



Western Blot

Various lysates were subjected to SDS PAGE followed by western blot with DDX21 antibody (PHK42301) at 1µg/ml.

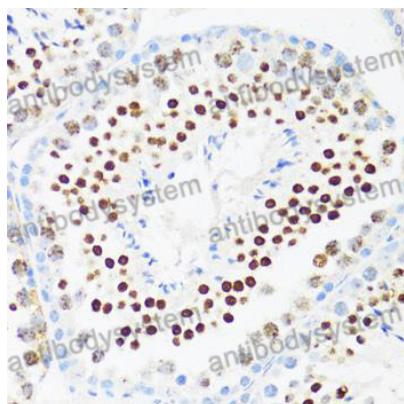
Lane 1: 293T cell lysate

Lane 2: K562 cell lysate

Second Ab: Goat Anti-Rabbit IgG H&L Polyclonal antibody, HRP (PTB96431) at 0.1 µg/mL.

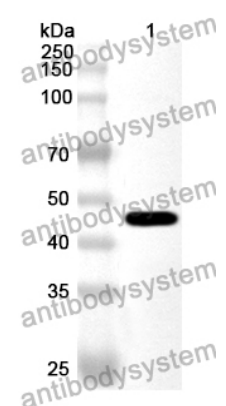
Predict MW: 87 kDa

Observed MW: 87 kDa



Immunohistochemical

Immunohistochemical analysis of mouse testis stained for DDX21 with PHK42301.



Western Blot

Recombinant Protein lysates were subjected to SDS PAGE followed by western blot with DDX21 antibody (PHK42301) at 1 µg/ml.

Lane 1: Recombinant Protein

Second Ab: Goat Anti-Rabbit IgG H&L Polyclonal antibody, HRP (PTB96431) at 0.1 µg/mL.

Predict MW: 45 kDa

Observed MW: 45 kDa