

Anti-Human DDX1 Polyclonal Antibody

Summary

Catalog No.	PHK42201
Host species	Rabbit
Tested applications	ELISA: 1:4000-1:8000, IHC: 1:50-1:100, WB: 1:1000-1:4000
Species reactivity	Human
Immunogen	E. coli - derived recombinant Human DDX1 (Gln72-Leu283).
Form	Liquid
Storage buffer	0.01M PBS, pH 7.4, 50% Glycerol, 0.05% Proclin 300.
Clonality	Polyclonal
Isotype	IgG
Applications	ELISA, IHC, WB
Target	DEAD box protein retinoblastoma, ATP-dependent RNA helicase DDX1, DEAD box protein 1, DBP-RB, DDX1
Purification	Purified by antigen affinity column.
Accession	Q92499
Stability and Storage	Use a manual defrost freezer and avoid repeated freeze thaw cycles. Store at 2 to 8°C for frequent use. Store at -20 to -80°C for twelve months from the date of receipt.
Note	For research use only.

Data Image

Various lysates were subjected to SDS PAGE followed by western blot with DDX1 antibody (PHK42201) at 1 μ g/ml.

Lane 1: Hela cell lysate

Lane 2: PC3 cell lysate

Lane 3: MCF7 cell lysate

Lane 4: NIH3T3 cell lysate

Lane 5: H1299 cell lysate

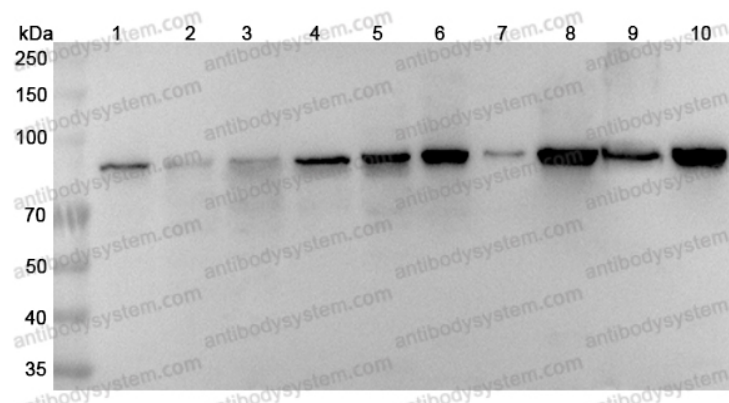
Lane 6: HepG2 cell lysate

Lane 7: Jurkat cell lysate

Lane 8: K562 cell lysate

Lane 9: Rat brain lysate

Lane 10: Mouse kidney lysate

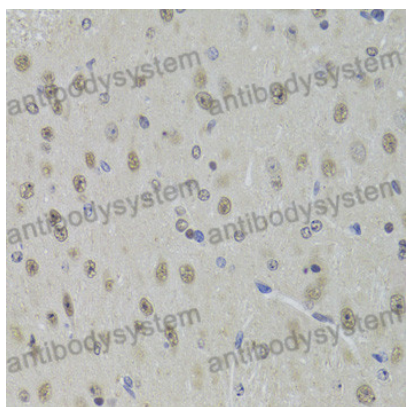


Western Blot

Second Ab: Goat Anti-Rabbit IgG H&L Polyclonal antibody, HRP (PTB96431) at 0.1 μ g/mL.

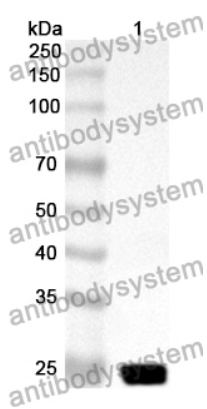
Predict MW: 82 kDa

Observed MW: 82 kDa



Immunohistochemical

Immunohistochemical analysis of mouse brain tissue stained for DDX1 with PHK42201.



Western Blot

Recombinant Protein lysates were subjected to SDS PAGE followed by western blot with DDX1 antibody (PHK42201) at 1 μ g/ml.

Lane 1: Recombinant Protein

Second Ab: Goat Anti-Rabbit IgG H&L Polyclonal antibody, HRP (PTB96431) at 0.1 μ g/mL.

Predict MW: 26 kDa

Observed MW: 26 kDa