

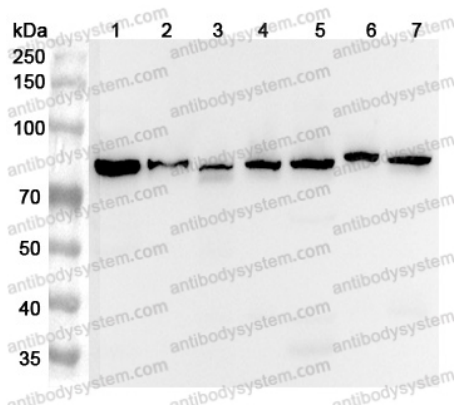
Anti-Human AFG3L2 Polyclonal Antibody

Summary

Catalog No.	PHK41901
Host species	Rabbit
Tested applications	ELISA: 1:4000-1:8000, IHC: 1:50-1:100, WB: 1:1000-1:4000
Species reactivity	Human
Immunogen	E. coli - derived recombinant Human AFG3L2 (Lys297-Ser765).
Form	Liquid
Storage buffer	0.01M PBS, pH 7.4, 50% Glycerol, 0.05% Proclin 300.
Clonality	Polyclonal
Isotype	IgG
Applications	ELISA, IHC, WB
Target	AFG3-like protein 2, AFG3L2, Paraplegin-like protein
Purification	Purified by antigen affinity column.
Accession	Q9Y4W6
Stability and Storage	Use a manual defrost freezer and avoid repeated freeze thaw cycles. Store at 2 to 8°C for frequent use. Store at -20 to -80°C for twelve months from the date of receipt.
Note	For research use only.

Data Image

Various lysates were subjected to SDS PAGE followed by western blot with AFG3L2 antibody (PHK41901) at 1 μ g/ml.



Western Blot

Lane 1: Mouse kidney lysate

Lane 2: Mouse brain lysate

Lane 3: Rat kidney lysate

Lane 4: Rat brain lysate

Lane 5: Rat liver lysate

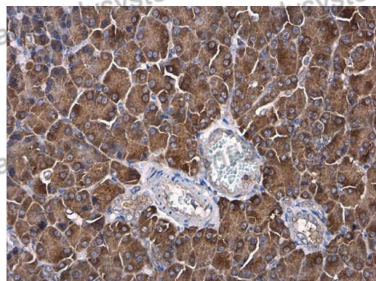
Lane 6: Mouse cerebellum lysate

Lane 7: Rat cerebellum lysate

Second Ab: Goat Anti-Rabbit IgG H&L Polyclonal antibody, HRP (PTB96431) at 0.1 μ g/mL.

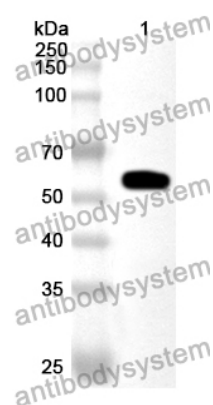
Predict MW: 89 kDa

Observed MW: 80 kDa



Immunohistochemical

Immunohistochemical analysis of rat pancreas stained for AFG3L2 with PHK41901.



Western Blot

Recombinant Protein lysates were subjected to SDS PAGE followed by western blot with AFG3L2 antibody (PHK41901) at 1 μ g/ml.

Lane 1: Recombinant Protein

Second Ab: Goat Anti-Rabbit IgG H&L Polyclonal antibody, HRP (PTB96431) at 0.1 μ g/mL.

Predict MW: 54 kDa

Observed MW: 54 kDa