

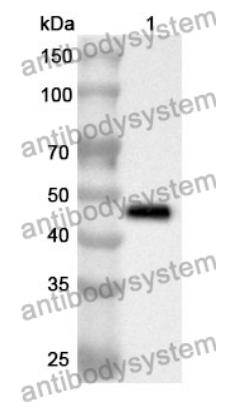
# Anti-Human RUVBL2 Polyclonal Antibody

## Summary

---

<b>Catalog No.</b>	PHK41701
<b>Host species</b>	Rabbit
<b>Tested applications</b>	ELISA: 1:4000-1:8000, IHC: 1:50-1:100, WB: 1:1000-1:4000
<b>Species reactivity</b>	Human
<b>Immunogen</b>	E. coli - derived recombinant Human RUVBL2 (Gln49-Ser463).
<b>Form</b>	Liquid
<b>Storage buffer</b>	0.01M PBS, pH 7.4, 50% Glycerol, 0.05% Proclin 300.
<b>Clonality</b>	Polyclonal
<b>Isotype</b>	IgG
<b>Applications</b>	ELISA, IHC, WB
<b>Target</b>	48 kDa TATA box-binding protein-interacting protein, RuvB-like 2, INO80 complex subunit J, RUVBL2, TAP54-beta, Reptin 52, TIP60-associated protein 54-beta, TIP48, TIP49B, 51 kDa erythrocyte cytosolic protein, 48 kDa TBP-interacting protein, Repressing pontin 52, INO80J, TIP49b, ECP-51
<b>Purification</b>	Purified by antigen affinity column.
<b>Accession</b>	Q9Y230
<b>Stability and Storage</b>	Use a manual defrost freezer and avoid repeated freeze thaw cycles. Store at 2 to 8°C for frequent use. Store at -20 to -80°C for twelve months from the date of receipt.
<b>Note</b>	For research use only.

## Data Image



WESTERN-BLOT

Recombinant Protein lysates were subjected to SDS PAGE followed by western blot with RUVBL2 antibody (PHK41701) at 1 µg/ml.

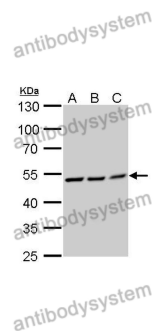
Lane 1: Recombinant protein

Second Ab: Goat Anti-Rabbit IgG H&L Polyclonal antibody, HRP (PTB96431) at 0.1 µg/mL.

Predict MW: 48 kDa

Observed MW: 48 kDa

Various lysates were subjected to SDS PAGE followed by western blot with RUVBL2 antibody (PHK41701) at 1 µg/ml.



Western Blot

Lane 1: HEK-293T

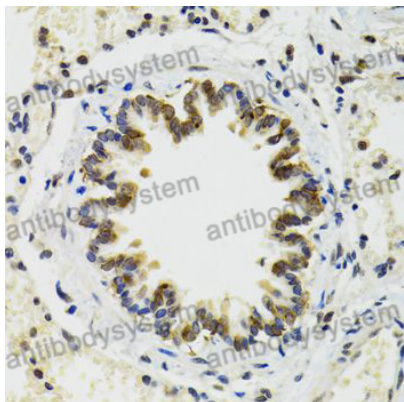
Lane 2: A431

Lane 3: Hela

Second Ab: Goat Anti-Rabbit IgG H&L Polyclonal antibody, HRP (PTB96431) at 0.1 µg/mL.

Predict MW: 51 kDa

Observed MW: 51 kDa



Immunohistochemical

Immunohistochemical analysis of rat lung tissue stained for RUVBL2 with PHK41701.