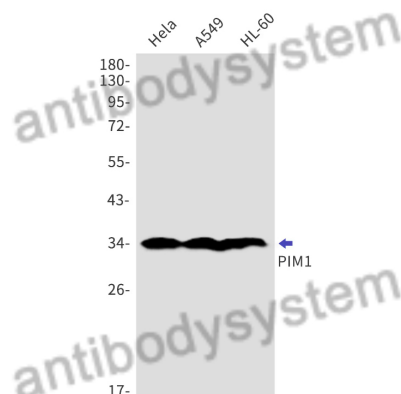


Anti-PIM1 Polyclonal Antibody

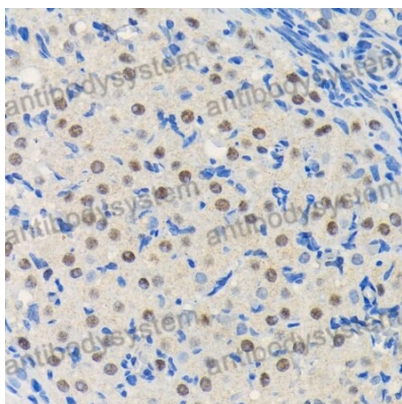
Summary

Catalog No.	PHC87901
Host species	Rabbit
Tested applications	ELISA: 1:4000-1:8000, IHC: 1:50-1:100, WB: 1:1000-1:4000
Species reactivity	Human, Mouse, Rat
Immunogen	E. coli - derived recombinant Human PIM1 (Ser98-Lys313).
Form	Liquid
Storage buffer	0.01M PBS, pH 7.4, 50% Glycerol, 0.05% Proclin 300.
Clonality	Polyclonal
Isotype	IgG
Applications	ELISA, IHC, WB
Target	PIM1,Serine/threonine-protein kinase pim-1
Purification	Purified by antigen affinity column.
Accession	P11309
Stability and Storage	Use a manual defrost freezer and avoid repeated freeze thaw cycles. Store at 2 to 8°C for frequent use. Store at -20 to -80°C for twelve months from the date of receipt.
Note	For research use only.

Data Image



Western Blot



Immunohistochemical

Various lysates were subjected to SDS PAGE followed by western blot with PIM1 antibody (PHC87901) at 1 µg/ml.

Lane 1: HeLa

Lane 2: A549

Lane 3: HL-60

Second Ab: Goat Anti-Rabbit IgG H&L Polyclonal antibody, HRP (PTB96431) at 0.1 µg/mL.

Predict MW: 35 kDa

Observed MW: 35 kDa

Immunohistochemical analysis of rat ovary stained for PIM1 with PHC87901.