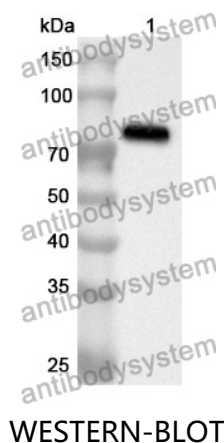


Anti-Human LIG4 Polyclonal Antibody

Summary

Catalog No.	PHE73701
Host species	Rabbit
Tested applications	ELISA: 1:4000-1:8000, IHC: 1:50-1:100, WB: 1:1000-1:4000
Species reactivity	Human
Immunogen	E. coli - derived recombinant Human LIG4 (Met1-Lys609).
Form	Liquid
Storage buffer	0.01M PBS, pH 7.4, 50% Glycerol, 0.05% Proclin 300.
Clonality	Polyclonal
Isotype	IgG
Applications	ELISA, IHC, WB
Target	DNA ligase IV, Polydeoxyribonucleotide synthase [ATP] 4, LIG4, DNA ligase 4
Purification	Purified by antigen affinity column.
Accession	P49917
Stability and Storage	Use a manual defrost freezer and avoid repeated freeze thaw cycles. Store at 2 to 8°C for frequent use. Store at -20 to -80°C for twelve months from the date of receipt.
Note	For research use only.

Data Image



Recombinant Protein lysates were subjected to SDS PAGE followed by western blot with LIG4 antibody (PHE73701) at 1 µg/ml.

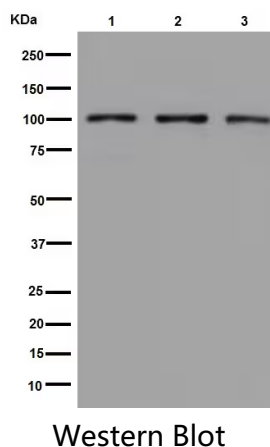
Lane 1: Recombinant protein

Second Ab: Goat Anti-Rabbit IgG H&L Polyclonal antibody, HRP (PTB96431) at 0.1 µg/mL.

Predict MW: 72 kDa

Observed MW: 72 kDa

Various lysates were subjected to SDS PAGE followed by western blot with LIG4 antibody (PHE73701) at 1 µg/ml.



Lane 1: Hela

Lane 2: Jurkat

Lane 3: Ramos

Second Ab: Goat Anti-Rabbit IgG H&L Polyclonal antibody, HRP (PTB96431) at 0.1 µg/mL.

Predict MW: 104 kDa

Observed MW: 104 kDa



Immunohistochemical analysis of mouse heart stained for LIG4 with PHE73701.

Immunohistochemical