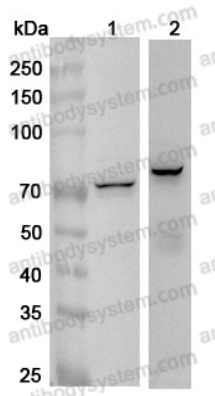


Anti-Human IGF2BP1 Polyclonal Antibody

Summary

Catalog No.	PHK41301
Host species	Rabbit
Tested applications	ELISA: 1:4000-1:8000, IHC: 1:50-1:100, WB: 1:1000-1:4000
Species reactivity	Human
Immunogen	E. coli - derived recombinant Human IGF2BP1 (Val194-Asn369).
Form	Liquid
Storage buffer	0.01M PBS, pH 7.4, 50% Glycerol, 0.05% Proclin 300.
Clonality	Polyclonal
Isotype	IgG
Applications	ELISA, IHC, WB
Target	VICKZ family member 1, Zipcode-binding protein 1, IGF2BP1, VICKZ1, Coding region determinant-binding protein, IMP1, IMP-1, ZBP1, IGF-II mRNA-binding protein 1, CRDBP, Insulin-like growth factor 2 mRNA-binding protein 1, ZBP-1, CRD-BP, IGF2 mRNA-binding protein 1
Purification	Purified by antigen affinity column.
Accession	Q9NZI8
Stability and Storage	Use a manual defrost freezer and avoid repeated freeze thaw cycles. Store at 2 to 8°C for frequent use. Store at -20 to -80°C for twelve months from the date of receipt.
Note	For research use only.

Data Image



Western Blot

Various lysates were subjected to SDS PAGE followed by western blot with IGF2BP1 antibody (PHK41301) at 1 μ g/ml.

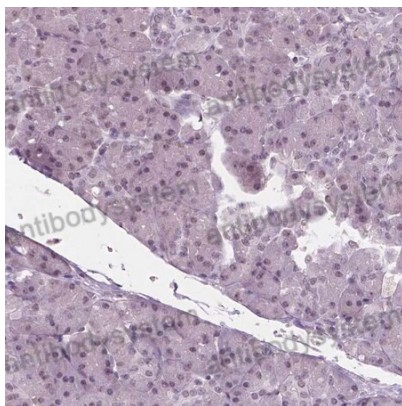
Lane 1: K562 cell lysate

Lane 2: 293T cell lysate

Second Ab: Goat Anti-Rabbit IgG H&L Polyclonal antibody, HRP (PTB96431) at 0.1 μ g/mL.

Predict MW: 63 kDa

Observed MW: 65-70 kDa



Immunohistochemical

Immunohistochemical analysis of human pancreas tissue stained for IGF2BP1 with PHK41301.



Western Blot

Recombinant Protein lysates were subjected to SDS PAGE followed by western blot with IGF2BP1 antibody (PHK41301) at 1 μ g/ml.

Lane 1: Recombinant Protein

Second Ab: Goat Anti-Rabbit IgG H&L Polyclonal antibody, HRP (PTB96431) at 0.1 μ g/mL.

Predict MW: 22 kDa

Observed MW: 22 kDa