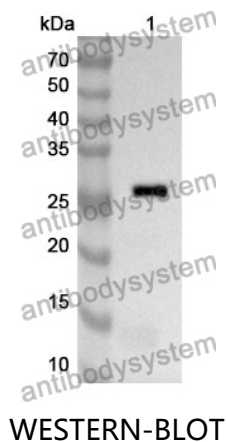


Anti-Human ATG14 Polyclonal Antibody

Summary

Catalog No.	PHK40801
Host species	Rabbit
Tested applications	ELISA: 1:4000-1:8000, IHC: 1:50-1:200, WB: 1:500-1:4000
Species reactivity	Human
Immunogen	E. coli - derived recombinant Human ATG14 (Glu209-Glu415).
Form	Liquid
Storage buffer	Liquid in PBS containing 50% glycerol, 0.5% BSA and 0.02% sodium azide.
Concentration	1 mg/ml
Clonality	Polyclonal
Isotype	IgG
Applications	ELISA, IHC, WB
Target	ATG14L, ATG14, Barkor, Atg14L, Beclin 1-associated autophagy-related key regulator, Autophagy-related protein 14-like protein, KIAA0831
Purification	Purified by antigen affinity column.
Accession	Q6ZNE5
Stability and Storage	Use a manual defrost freezer and avoid repeated freeze thaw cycles. Store at 2 to 8°C for frequent use. Store at -20 to -80°C for twelve months from the date of receipt.
Note	For research use only.

Data Image



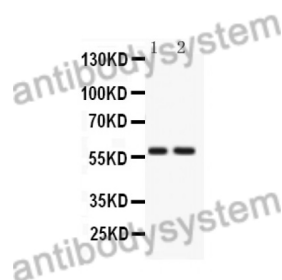
Recombinant Protein lysates were subjected to SDS PAGE followed by western blot with ATG14 antibody (PHK40801) at 1 μ g/ml.

Lane 1: Recombinant protein

Second Ab: Goat Anti-Rabbit IgG H&L Polyclonal antibody, HRP (PTB96431) at 0.1 μ g/mL.

Predict MW: 25 kDa

Observed MW: 25 kDa



Various lysates were subjected to SDS PAGE followed by western blot with ATG14 antibody (PHK40801) at 1 μ g/ml.

Lane 1: Rat brain

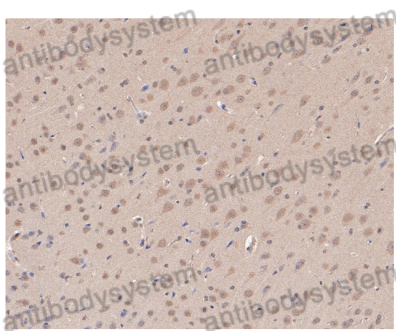
Lane 2: Hela

Second Ab: Goat Anti-Rabbit IgG H&L Polyclonal antibody, HRP (PTB96431) at 0.1 μ g/mL.

Predict MW: 55 kDa

Observed MW: 57 kDa

Western Blot



Immunohistochemical analysis of rat brain stained for ATG14 with PHK40801.

Immunohistochemical