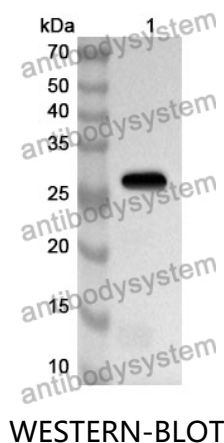


Anti-Human CDC25C Polyclonal Antibody

Summary

Catalog No.	PHD88501
Host species	Rabbit
Tested applications	ELISA: 1:4000-1:8000, IHC: 1:50-1:100, WB: 1:1000-1:4000
Species reactivity	Human
Immunogen	E. coli - derived recombinant Human CDC25C (Thr268-Pro473).
Form	Liquid
Storage buffer	0.01M PBS, pH 7.4, 50% Glycerol, 0.05% Proclin 300.
Clonality	Polyclonal
Isotype	IgG
Applications	ELISA, IHC, WB
Target	M-phase inducer phosphatase 3, Dual specificity phosphatase Cdc25C, CDC25C
Purification	Purified by antigen affinity column.
Accession	P30307
Stability and Storage	Use a manual defrost freezer and avoid repeated freeze thaw cycles. Store at 2 to 8°C for frequent use. Store at -20 to -80°C for twelve months from the date of receipt.
Note	For research use only.

Data Image



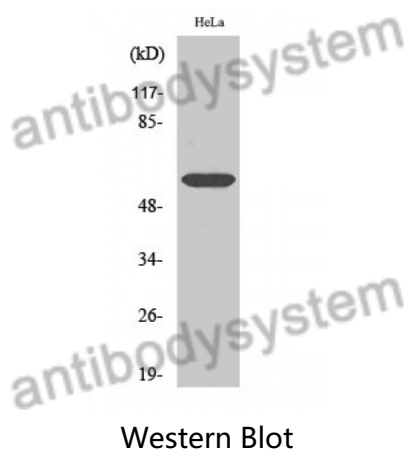
Recombinant Protein lysates were subjected to SDS PAGE followed by western blot with CDC25C antibody (PHD88501) at 1 µg/ml.

Lane 1: Recombinant protein

Second Ab: Goat Anti-Rabbit IgG H&L Polyclonal antibody, HRP (PTB96431) at 0.1 µg/mL.

Predict MW: 26 kDa

Observed MW: 26 kDa



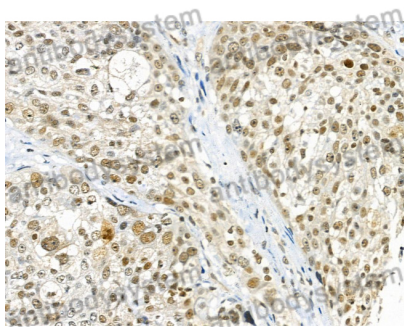
Various lysates were subjected to SDS PAGE followed by western blot with CDC25C antibody (PHD88501) at 1 µg/ml.

Lane 1: HeLa

Second Ab: Goat Anti-Rabbit IgG H&L Polyclonal antibody, HRP (PTB96431) at 0.1 µg/mL.

Predict MW: 53 kDa

Observed MW: 53 kDa



Immunohistochemical

Immunohistochemical analysis of human pancreatic cancer tissue stained for CDC25C with PHD88501.