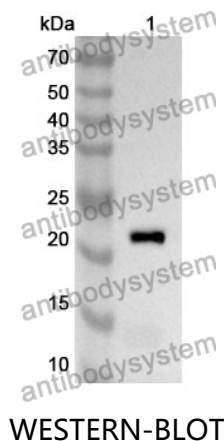


Anti-Human CDC25A Polyclonal Antibody

Summary

Catalog No.	PHD88301
Host species	Rabbit
Tested applications	ELISA: 1:4000-1:8000, IHC: 1:50-1:100, WB: 1:1000-1:4000
Species reactivity	Human
Immunogen	E. coli - derived recombinant Human CDC25A (Asp356-Leu524).
Form	Liquid
Storage buffer	0.01M PBS, pH 7.4, 50% Glycerol, 0.05% Proclin 300.
Clonality	Polyclonal
Isotype	IgG
Applications	ELISA, IHC, WB
Target	Dual specificity phosphatase Cdc25A, M-phase inducer phosphatase 1, CDC25A
Purification	Purified by antigen affinity column.
Accession	P30304
Stability and Storage	Use a manual defrost freezer and avoid repeated freeze thaw cycles. Store at 2 to 8°C for frequent use. Store at -20 to -80°C for twelve months from the date of receipt.
Note	For research use only.

Data Image



Recombinant Protein lysates were subjected to SDS PAGE followed by western blot with CDC25A antibody (PHD88301) at 1 µg/ml.

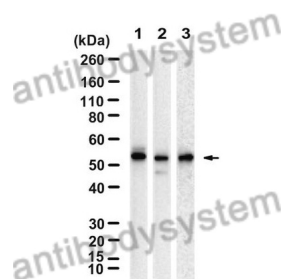
Lane 1: Recombinant protein

Second Ab: Goat Anti-Rabbit IgG H&L Polyclonal antibody, HRP (PTB96431) at 0.1 µg/mL.

Predict MW: 23 kDa

Observed MW: 23 kDa

Various lysates were subjected to SDS PAGE followed by western blot with CDC25A antibody (PHD88301) at 1 µg/ml.



Western Blot

Lane 1: Hela

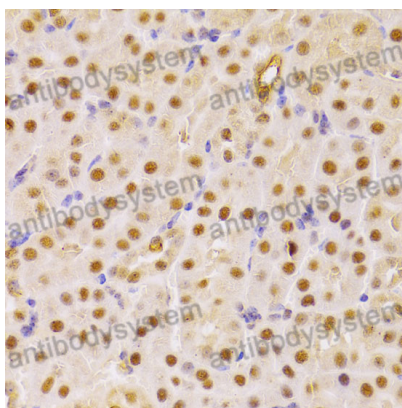
Lane 2: HEK293

Lane 3: HepG2

Second Ab: Goat Anti-Rabbit IgG H&L Polyclonal antibody, HRP (PTB96431) at 0.1 µg/mL.

Predict MW: 54 kDa

Observed MW: 54 kDa



Immunohistochemical

Immunohistochemical analysis of mouse kidney stained for CDC25A with PHD88301.