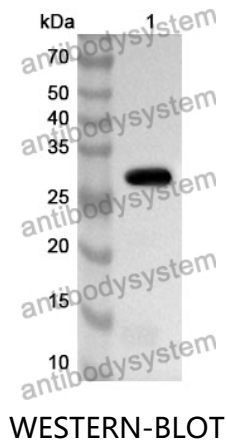


Anti-Human FHL1 Polyclonal Antibody

Summary

Catalog No.	PHG62701
Host species	Rabbit
Tested applications	ELISA: 1:4000-1:8000, IHC: 1:50-1:100, WB: 1:1000-1:4000
Species reactivity	Human
Immunogen	E. coli - derived recombinant Human FHL1 (Met1-Lys220).
Form	Liquid
Storage buffer	0.01M PBS, pH 7.4, 50% Glycerol, 0.05% Proclin 300.
Clonality	Polyclonal
Isotype	IgG
Applications	ELISA, IHC, WB
Target	SLIM, SLIM1, Four and a half LIM domains protein 1, FHL-1, SLIM-1, Skeletal muscle LIM-protein 1, FHL1
Purification	Purified by antigen affinity column.
Accession	Q13642
Stability and Storage	Use a manual defrost freezer and avoid repeated freeze thaw cycles. Store at 2 to 8°C for frequent use. Store at -20 to -80°C for twelve months from the date of receipt.
Note	For research use only.

Data Image



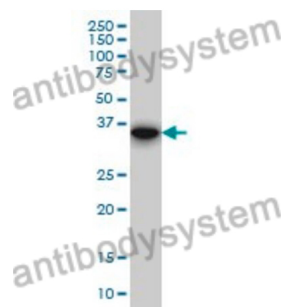
Recombinant Protein lysates were subjected to SDS PAGE followed by western blot with FHL1 antibody (PHG62701) at 1 µg/ml.

Lane 1: Recombinant protein

Second Ab: Goat Anti-Rabbit IgG H&L Polyclonal antibody, HRP (PTB96431) at 0.1 µg/mL.

Predict MW: 27 kDa

Observed MW: 27 kDa



Western Blot

Various lysates were subjected to SDS PAGE followed by western blot with FHL1 antibody (PHG62701) at 1 µg/ml.

Lane 1: RAW264.7

Second Ab: Goat Anti-Rabbit IgG H&L Polyclonal antibody, HRP (PTB96431) at 0.1 µg/mL.

Predict MW: 36 kDa

Observed MW: 36 kDa



Immunohistochemical

Immunohistochemical analysis of mouse muscle tissue stained for FHL1 with PHG62701.