

# Anti-Human MTAP Polyclonal Antibody

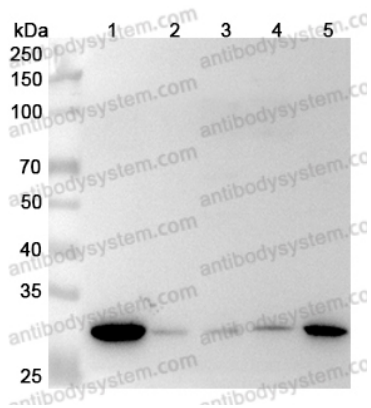
## Summary

---

<b>Catalog No.</b>	PHG41301
<b>Host species</b>	Rabbit
<b>Tested applications</b>	ELISA: 1:4000-1:8000, IHC: 1:50-1:100, WB: 1:1000-1:4000
<b>Species reactivity</b>	Human
<b>Immunogen</b>	E. coli - derived recombinant Human MTAP (Met1-His283).
<b>Form</b>	Liquid
<b>Storage buffer</b>	0.01M PBS, pH 7.4, 50% Glycerol, 0.05% Proclin 300.
<b>Clonality</b>	Polyclonal
<b>Isotype</b>	IgG
<b>Applications</b>	ELISA, IHC, WB
<b>Target</b>	MTAP, S-methyl-5'-thioadenosine phosphorylase, MSAP, MTA phosphorylase, 5'-methylthioadenosine phosphorylase, MTAPase
<b>Purification</b>	Purified by antigen affinity column.
<b>Accession</b>	Q13126
<b>Stability and Storage</b>	Use a manual defrost freezer and avoid repeated freeze thaw cycles. Store at 2 to 8°C for frequent use. Store at -20 to -80°C for twelve months from the date of receipt.
<b>Note</b>	For research use only.

## Data Image

---



Western Blot

Various lysates were subjected to SDS PAGE followed by western blot with MTAP antibody (PHG41301) at 1 $\mu$ g/ml.

Lane 1: NIH3T3 cell lysate

Lane 2: HT-29 cell lysate

Lane 3: Raji cell lysate

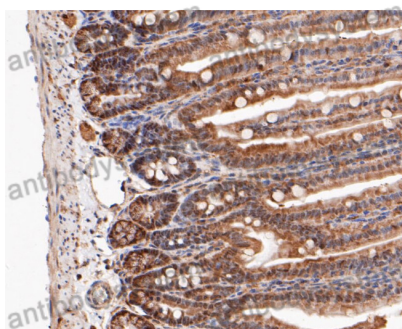
Lane 4: Hela cell lysate

Lane 5: HCT116 cell lysate

Second Ab: Goat Anti-Rabbit IgG H&L Polyclonal antibody, HRP (PTB96431) at 0.1  $\mu$ g/mL.

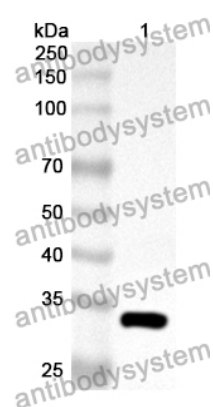
Predict MW: 31 kDa

Observed MW: 31 kDa



Immunohistochemical

Immunohistochemical analysis of mouse colon stained for MTAP with PHG41301.



Western Blot

Recombinant Protein lysates were subjected to SDS PAGE followed by western blot with MTAP antibody (PHG41301) at 1  $\mu$ g/ml.

Lane 1: Recombinant Protein

Second Ab: Goat Anti-Rabbit IgG H&L Polyclonal antibody, HRP (PTB96431) at 0.1  $\mu$ g/mL.

Predict MW: 33 kDa

Observed MW: 33 kDa