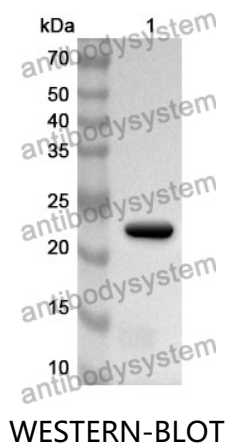


Anti-Human TIMP2 Polyclonal Antibody

Summary

Catalog No.	PHD14501
Host species	Rabbit
Tested applications	ELISA: 1:4000-1:8000, IHC: 1:50-1:100, WB: 1:1000-1:4000
Species reactivity	Human
Immunogen	E. coli - derived recombinant Human TIMP2 (Gln35-Pro220).
Form	Liquid
Storage buffer	0.01M PBS, pH 7.4, 50% Glycerol, 0.05% Proclin 300.
Clonality	Polyclonal
Isotype	IgG
Applications	ELISA, IHC, WB
Target	TIMP2, TIMP-2, CSC-21K, Tissue inhibitor of metalloproteinases 2, Metalloproteinase inhibitor 2
Purification	Purified by antigen affinity column.
Accession	P16035
Stability and Storage	Use a manual defrost freezer and avoid repeated freeze thaw cycles. Store at 2 to 8°C for frequent use. Store at -20 to -80°C for twelve months from the date of receipt.
Note	For research use only.

Data Image



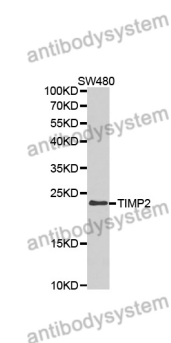
Recombinant Protein lysates were subjected to SDS PAGE followed by western blot with TIMP2 antibody (PHD14501) at 1 µg/ml.

Lane 1: Recombinant protein

Second Ab: Goat Anti-Rabbit IgG H&L Polyclonal antibody, HRP (PTB96431) at 0.1 µg/mL.

Predict MW: 23 kDa

Observed MW: 23 kDa



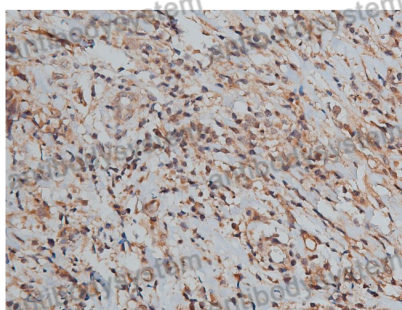
Various lysates were subjected to SDS PAGE followed by western blot with TIMP2 antibody (PHD14501) at 1 µg/ml.

Lane 1: SW480

Second Ab: Goat Anti-Rabbit IgG H&L Polyclonal antibody, HRP (PTB96431) at 0.1 µg/mL.

Predict MW: 24 kDa

Observed MW: 23 kDa



Immunohistochemical

Immunohistochemical analysis of human breast cancer stained for TIMP2 with PHD14501.