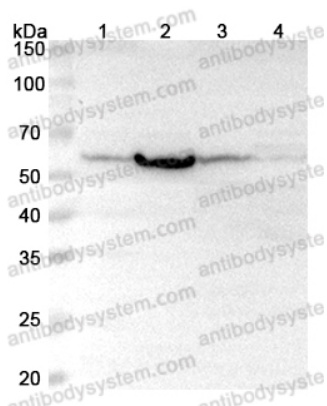


Anti-Human PHGDH Polyclonal Antibody

Summary

Catalog No.	PHA59601
Host species	Rabbit
Tested applications	ELISA: 1:4000-1:8000, IHC: 1:50-1:100, WB: 1:1000-1:4000
Species reactivity	Human
Immunogen	E. coli - derived recombinant Human PHGDH (Met1-Phe533).
Form	Liquid
Storage buffer	0.01M PBS, pH 7.4, 50% Glycerol, 0.05% Proclin 300.
Clonality	Polyclonal
Isotype	IgG
Applications	ELISA, IHC, WB
Target	2-oxoglutarate reductase, Malate dehydrogenase, 3-PGDH, PGDH3, PHGDH, D-3-phosphoglycerate dehydrogenase
Purification	Purified by antigen affinity column.
Accession	O43175
Stability and Storage	Use a manual defrost freezer and avoid repeated freeze thaw cycles. Store at 2 to 8°C for frequent use. Store at -20 to -80°C for twelve months from the date of receipt.
Note	For research use only.

Data Image



Western Blot

Various lysates were subjected to SDS PAGE followed by western blot with PHGDH antibody (PHA59601) at 1 μ g/ml.

Lane 1: HepG2 cell lysate

Lane 2: 293T cell lysate

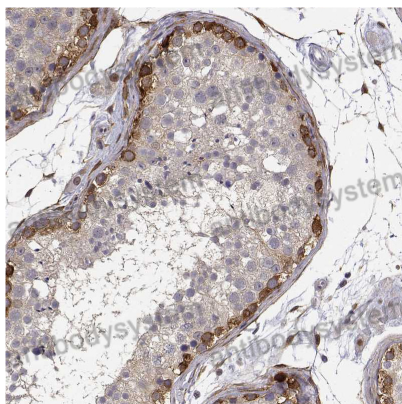
Lane 3: MCF7 cell lysate

Lane 4: K562 cell lysate

Second Ab: Goat Anti-Rabbit IgG H&L Polyclonal antibody, HRP (PTB96431) at 0.1 μ g/mL.

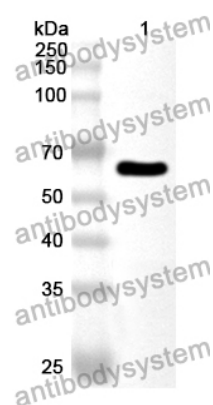
Predict MW: 57 kDa

Observed MW: 57 kDa



Immunohistochemical

Immunohistochemical analysis of human testis stained for PHGDH with PHA59601.



Western Blot

Recombinant Protein lysates were subjected to SDS PAGE followed by western blot with PHGDH antibody (PHA59601) at 1 µg/ml.

Lane 1: Recombinant Protein

Second Ab: Goat Anti-Rabbit IgG H&L Polyclonal antibody, HRP (PTB96431) at 0.1 µg/mL.

Predict MW: 59 kDa

Observed MW: 59 kDa