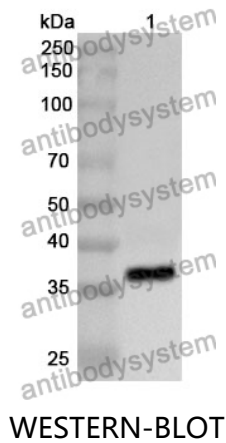


Anti-Human MTHFD2 Polyclonal Antibody

Summary

Catalog No.	PHD02701
Host species	Rabbit
Tested applications	ELISA: 1:4000-1:8000, IHC: 1:50-1:100, WB: 1:1000-1:4000
Species reactivity	Human
Immunogen	E. coli - derived recombinant Human MTHFD2 (Glu36-Asn350).
Form	Liquid
Storage buffer	0.01M PBS, pH 7.4, 50% Glycerol, 0.05% Proclin 300.
Clonality	Polyclonal
Isotype	IgG
Applications	ELISA, IHC, WB
Target	NMDMC, MTHFD2, Bifunctional methylenetetrahydrofolate dehydrogenase/cyclohydrolase, mitochondrial
Purification	Purified by antigen affinity column.
Accession	P13995
Stability and Storage	Use a manual defrost freezer and avoid repeated freeze thaw cycles. Store at 2 to 8°C for frequent use. Store at -20 to -80°C for twelve months from the date of receipt.
Note	For research use only.

Data Image



Recombinant Protein lysates were subjected to SDS PAGE followed by western blot with MTHFD2 antibody (PHD02701) at 1 $\mu\text{g/ml}$.

Lane 1: Recombinant protein

Second Ab: Goat Anti-Rabbit IgG H&L Polyclonal antibody, HRP (PTB96431) at 0.1 $\mu\text{g/mL}$.

Predict MW: 36 kDa

Observed MW: 36 kDa

Various lysates were subjected to SDS PAGE followed by western blot with MTHFD2 antibody (PHD02701) at 1 $\mu\text{g/ml}$.

Lane 1: 293T

Lane 2: A431

Lane 3: HepG2

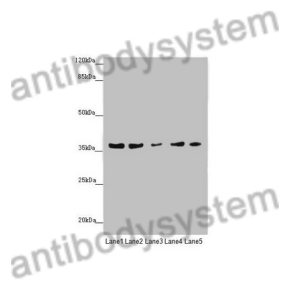
Lane 4: HeLa

Lane 5: K562

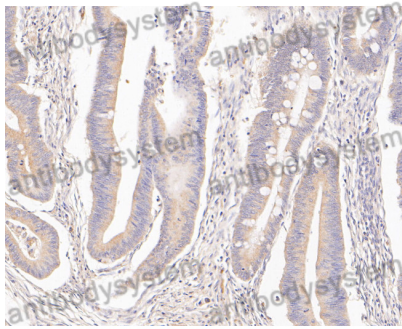
Second Ab: Goat Anti-Rabbit IgG H&L Polyclonal antibody, HRP (PTB96431) at 0.1 $\mu\text{g/mL}$.

Predict MW: 38 kDa

Observed MW: 38 kDa



Western Blot



Immunohistochemical analysis of human colon carcinoma stained for MTHFD2 with PHD02701.

Immunohistochemical