

Anti-PDHB Polyclonal Antibody

Summary

Catalog No.	PHC86401
Host species	Rabbit
Tested applications	ELISA: 1:4000-1:8000, IHC: 1:50-1:100, WB: 1:1000-1:4000
Species reactivity	Human, Mouse, Rat
Immunogen	E. coli - derived recombinant Human PDHB (Leu31-Asn341).
Form	Liquid
Storage buffer	0.01M PBS, pH 7.4, 50% Glycerol, 0.05% Proclin 300.
Clonality	Polyclonal
Isotype	IgG
Applications	ELISA, IHC, WB
Target	PDHB,PDHE1-B,PHE1B,Pyruvate dehydrogenase E1 component subunit beta,mitochondrial
Purification	Purified by antigen affinity column.
Accession	P11177
Stability and Storage	Use a manual defrost freezer and avoid repeated freeze thaw cycles. Store at 2 to 8°C for frequent use. Store at -20 to -80°C for twelve months from the date of receipt.
Note	For research use only.

Data Image



Recombinant Protein lysates were subjected to SDS PAGE followed by western blot with PDHB antibody (PHC86401) at 1 μ g/ml.

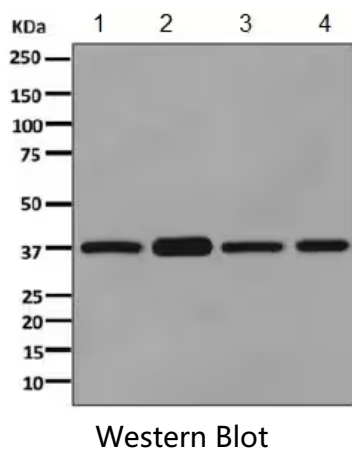
Lane 1: Recombinant protein

Second Ab: Goat Anti-Rabbit IgG H&L Polyclonal antibody, HRP (PTB96431) at 0.1 μ g/mL.

Predict MW: 36 kDa

Observed MW: 36 kDa

Various lysates were subjected to SDS PAGE followed by western blot with PDHB antibody (PHC86401) at 1 μ g/ml.



Lane 1: HepG2

Lane 2: Human heart

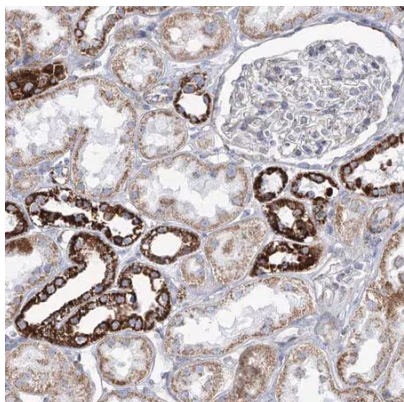
Lane 3: Hela

Lane 4: A375

Second Ab: Goat Anti-Rabbit IgG H&L Polyclonal antibody, HRP (PTB96431) at 0.1 μ g/mL.

Predict MW: 37 kDa

Observed MW: 37 kDa



Immunohistochemical

Immunohistochemical analysis of human kidney stained for PDHB with PHC86401.