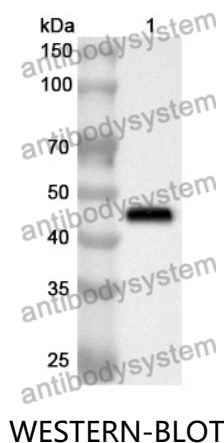


Anti-Human ACADM Polyclonal Antibody

Summary

Catalog No.	PHC88001
Host species	Rabbit
Tested applications	ELISA: 1:4000-1:8000, IHC: 1:50-1:100, WB: 1:1000-1:4000
Species reactivity	Human
Immunogen	E. coli - derived recombinant Human ACADM (Lys26-Asn421).
Form	Liquid
Storage buffer	0.01M PBS, pH 7.4, 50% Glycerol, 0.05% Proclin 300.
Clonality	Polyclonal
Isotype	IgG
Applications	ELISA, IHC, WB
Target	MCADH, MCAD, ACADM, Medium chain acyl-CoA dehydrogenase, Medium-chain specific acyl-CoA dehydrogenase, mitochondrial
Purification	Purified by antigen affinity column.
Accession	P11310
Stability and Storage	Use a manual defrost freezer and avoid repeated freeze thaw cycles. Store at 2 to 8°C for frequent use. Store at -20 to -80°C for twelve months from the date of receipt.
Note	For research use only.

Data Image



Recombinant Protein lysates were subjected to SDS PAGE followed by western blot with ACADM antibody (PHC88001) at 1 µg/ml.

Lane 1: Recombinant protein

Second Ab: Goat Anti-Rabbit IgG H&L Polyclonal antibody, HRP (PTB96431) at 0.1 µg/mL.

Predict MW: 46 kDa

Observed MW: 46 kDa



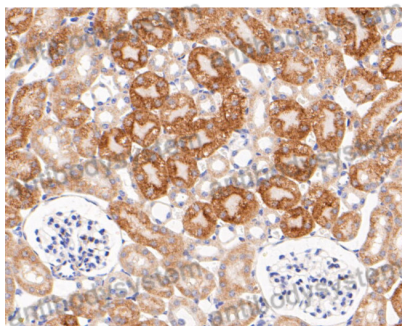
Various lysates were subjected to SDS PAGE followed by western blot with ACADM antibody (PHC88001) at 1 µg/ml.

Lane 1: Human heart

Second Ab: Goat Anti-Rabbit IgG H&L Polyclonal antibody, HRP (PTB96431) at 0.1 µg/mL.

Predict MW: 47 kDa

Observed MW: 47 kDa



Immunohistochemical

Immunohistochemical analysis of mouse kidney stained for ACADM with PHC88001.