

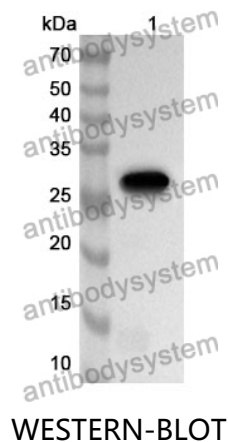
# Anti-Human ZC3HAV1 Polyclonal Antibody

## Summary

---

<b>Catalog No.</b>	PHK39901
<b>Host species</b>	Rabbit
<b>Tested applications</b>	ELISA: 1:4000-1:8000, IHC: 1:50-1:100, WB: 1:1000-1:4000
<b>Species reactivity</b>	Human
<b>Immunogen</b>	E. coli - derived recombinant Human ZC3HAV1 (Met1-Asn227).
<b>Form</b>	Liquid
<b>Storage buffer</b>	0.01M PBS, pH 7.4, 50% Glycerol, 0.05% Proclin 300.
<b>Clonality</b>	Polyclonal
<b>Isotype</b>	IgG
<b>Applications</b>	ELISA, IHC, WB
<b>Target</b>	Zinc finger CCCH-type antiviral protein 1, Zinc finger CCCH domain-containing protein 2, ZC3HAV1, ZC3HDC2, ZAP, Zinc finger antiviral protein, ARTD13, PARP13, ADP-ribosyltransferase diphtheria toxin-like 13, Inactive Poly [ADP-ribose] polymerase 13
<b>Purification</b>	Purified by antigen affinity column.
<b>Accession</b>	Q7Z2W4
<b>Stability and Storage</b>	Use a manual defrost freezer and avoid repeated freeze thaw cycles. Store at 2 to 8°C for frequent use. Store at -20 to -80°C for twelve months from the date of receipt.
<b>Note</b>	For research use only.

## Data Image



Recombinant Protein lysates were subjected to SDS PAGE followed by western blot with ZC3HAV1 antibody (PHK39901) at 1 µg/ml.

Lane 1: Recombinant protein

Second Ab: Goat Anti-Rabbit IgG H&L Polyclonal antibody, HRP (PTB96431) at 0.1 µg/mL.

Predict MW: 28 kDa

Observed MW: 28 kDa

Various lysates were subjected to SDS PAGE followed by western blot with ZC3HAV1 antibody (PHK39901) at 1 µg/ml.

Lane 1: HEK-293T

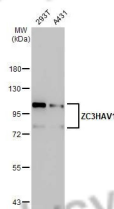
Lane 2: A431

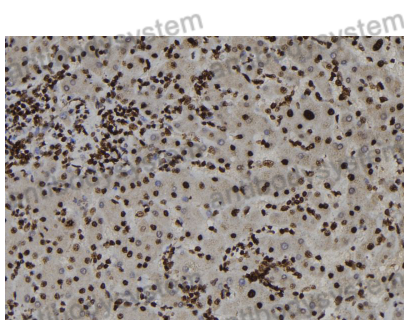
Second Ab: Goat Anti-Rabbit IgG H&L Polyclonal antibody, HRP (PTB96431) at 0.1 µg/mL.

Predict MW: 101 kDa

Observed MW: 101 , 78 kDa

Western Blot





Immunohistochemical analysis of human liver  
stained for ZC3HAV1 with PHK39901.

Immunohistochemical