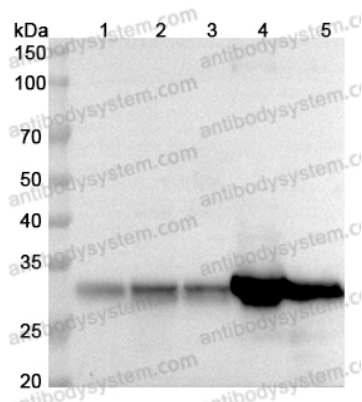


Anti-Human CYC1 Polyclonal Antibody

Summary

Catalog No.	PHC33901
Host species	Rabbit
Tested applications	ELISA: 1:4000-1:8000, IHC: 1:50-1:100, WB: 1:1000-1:4000
Species reactivity	Human
Immunogen	E. coli - derived recombinant Human CYC1 (Arg55-Gly217).
Form	Liquid
Storage buffer	0.01M PBS, pH 7.4, 50% Glycerol, 0.05% Proclin 300.
Clonality	Polyclonal
Isotype	IgG
Applications	ELISA, IHC, WB
Target	Complex III subunit 4, Cytochrome b-c1 complex subunit 4, Cytochrome c1, heme protein, mitochondrial, CYC1, Ubiquinol-cytochrome-c reductase complex cytochrome c1 subunit, Complex III subunit IV, Cytochrome c-1
Purification	Purified by antigen affinity column.
Accession	P08574
Stability and Storage	Use a manual defrost freezer and avoid repeated freeze thaw cycles. Store at 2 to 8°C for frequent use. Store at -20 to -80°C for twelve months from the date of receipt.
Note	For research use only.

Data Image



Western Blot

Various lysates were subjected to SDS PAGE followed by western blot with CYC1 antibody (PHC33901) at 1µg/ml.

Lane 1: A549 cell lysate

Lane 2: A375 cell lysate

Lane 3: LO2 cell lysate

Lane 4: Mouse brain lysate

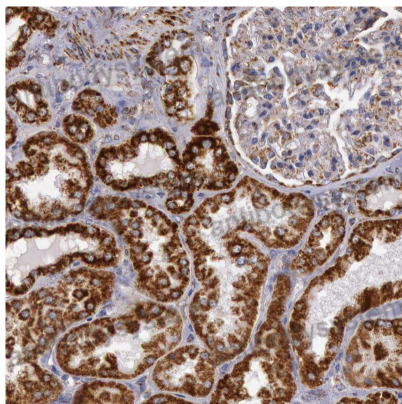
Lane 5: Mouse kidney lysate

Lane 6: Mouse liver lysate

Second Ab: Goat Anti-Rabbit IgG H&L Polyclonal antibody, HRP (PTB96431) at 0.1 µg/mL.

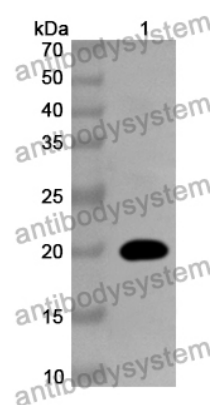
Predict MW: 35 kDa

Observed MW: 31 kDa



Immunohistochemical

Immunohistochemical analysis of human kidney stained for CYC1 with PHC33901.



Western Blot

Recombinant Protein lysates were subjected to SDS PAGE followed by western blot with CYC1 antibody (PHC33901) at 1 μ g/ml.

Lane 1: Recombinant Protein

Second Ab: Goat Anti-Rabbit IgG H&L Polyclonal antibody, HRP (PTB96431) at 0.1 μ g/mL.

Predict MW: 20 kDa

Observed MW: 20 kDa