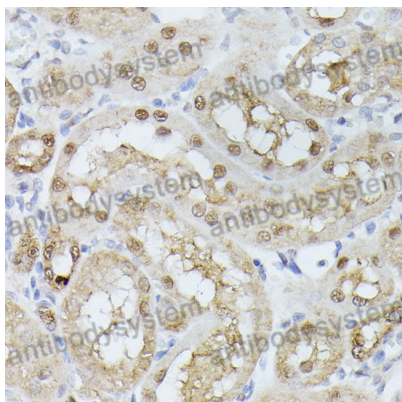


Anti-Human TPI1 Polyclonal Antibody

Summary

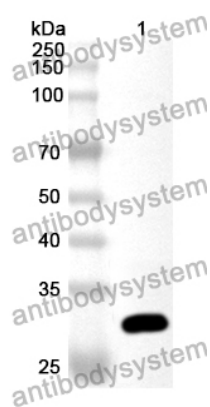
Catalog No.	PHF34301
Host species	Rabbit
Tested applications	ELISA: 1:4000-1:8000, IHC: 1:50-1:100, WB: 1:1000-1:4000
Species reactivity	Human
Immunogen	E. coli - derived recombinant Human TPI1 (Met1-Gln249).
Form	Liquid
Storage buffer	0.01M PBS, pH 7.4, 50% Glycerol, 0.05% Proclin 300.
Clonality	Polyclonal
Isotype	IgG
Applications	ELISA, IHC, WB
Target	TIM, Triose-phosphate isomerase, TPI, Methylglyoxal synthase, Triosephosphate isomerase, TPI1
Purification	Purified by antigen affinity column.
Accession	P60174
Stability and Storage	Use a manual defrost freezer and avoid repeated freeze thaw cycles. Store at 2 to 8°C for frequent use. Store at -20 to -80°C for twelve months from the date of receipt.
Note	For research use only.

Data Image



Immunohistochemical

Immunohistochemical analysis of rat kidney stained for TPI1 with PHF34301.



Western Blot

Recombinant Protein lysates were subjected to SDS PAGE followed by western blot with TPI1 antibody (PHF34301) at 1 µg/ml.

Lane 1: Recombinant Protein

Second Ab: Goat Anti-Rabbit IgG H&L Polyclonal antibody, HRP (PTB96431) at 0.1 µg/mL.

Predict MW: 29 kDa

Observed MW: 29 kDa